

# Meeting Experience

## **NEW** Onsite Registration/Badge Pickup

Name badges will not be mailed in advance. All attendees must pick up badges, lanyards and meeting materials at designated registration areas throughout McCormick Place, or at the Inter-Continental Hotel Chicago and the Hyatt Regency Chicago on Wacker Drive.

New registrants can also complete their registration at these locations – save time and register online at [RSNA.org/Register](http://RSNA.org/Register) and simply stop at one of these locations to pick up your badge. A valid photo ID is required.

### **North Building – Level 2**

Saturday - Thursday 7:00 a.m. – 5:00 p.m.

### **South Building – Level 1 Lakeside Center East Building – Level 2**

Saturday 11:30 a.m. – 5:00 p.m.

Sunday - Thursday 7:00 a.m. – 5:00 p.m.

Friday 7:00 a.m. – 12:00 p.m.\*

\* (Lakeside Information Desk Only)

## Reserve Your Room Now

We have secured more than 85 hotels in downtown Chicago offering discounted rates. Hotel rooms are only available to RSNA-registered participants. Register through [RSNA.org/Register](http://RSNA.org/Register) to view hotel rates and availability. Attendees reserving through RSNA can access great benefits including exclusive amenities and free transportation between hotels and McCormick Place.

## Exclusive Airfare Discounts

### **United Airlines**

United Airlines offers discounts from 2 percent to 10 percent off applicable fares. Discounts apply on United Airlines and flights operated by United or other airlines branded United Express. International discounts are allowed on flights operated and/or marketed on the following carriers, provided such flights are booked by a travel agency or United Reservations.

- Flights via the Atlantic: Air Canada, Austrian Airlines, Tyrolean Airways, Brussels Airlines, Lufthansa Airlines, Swiss International Airlines.

- Flights via the Pacific: United codeshare flights operated by All Nippon Airways. Applicable terms and restrictions apply.

Book online at [United.com](http://United.com) and enter offer code ZNX941696, or call United at 1-800-426-1122 and provide the offer code. Service fee applies for phone reservations.

### **Delta Air Lines**

Delta offers special discounts off most fares. Applicable restrictions may apply. Discounts applicable to U.S./Canada originating passengers. Book online at [Delta.com/Meetings](http://Delta.com/Meetings) and enter Meeting Event Code NMPES, or call Delta at 1-800-328-1111 and provide the event code. Service fee applies for phone reservations.

## International Services

International services and special signage featuring images will be placed in key areas at McCormick Place. Although the annual meeting is officially in English, RSNA offers translations services in Chinese, Dutch, French, German, Italian, Japanese and Spanish at the Information Desks.

## International Invitation Letter

RSNA offers an official letter of invitation for RSNA 2017 attendees. The letter of invitation, although not required for the visa application, can assist as a supporting document. Present this letter of invitation from RSNA to the Consular Officer during the visa interview.

- Request a customized letter during online registration or by visiting [RSNA.org/Visas](http://RSNA.org/Visas).
- All visa applicants are advised to apply for their visas as soon as travel to the U.S. is contemplated.

## Book Hotel Reservations for Next Year

New this year, RSNA will accept hotel reservations for RSNA 2018 at this year's annual meeting. Attendees will have the opportunity take advantage of the lower rates RSNA negotiates to get their choice of the best hotels in downtown Chicago. Attendees can stop by any of the four kiosks in McCormick Place to book a hotel for next year.

## Registration Packages

### RSNA Members

Code Category

|  | RECOMMENDED PACKAGE | STANDARD | DELUXE | PREMIUM LIMITED AVAILABILITY | VIRTUAL ONLY | EXECUTIVE LIMITED AVAILABILITY | TECHNICAL EXHIBITS ONLY (PRICE PER DAY) |
|--|---------------------|----------|--------|------------------------------|--------------|--------------------------------|---|
| 10 Associate Member  | <b>Deluxe</b>       | \$150    | \$300  | \$450                        | \$150        | N/A                            | N/A                                     |
| 11 Active Member   | <b>Deluxe</b>       | \$150    | \$300  | \$450                        | \$150        | N/A                            | N/A                                     |
| 12 Member-in-Training  | <b>Deluxe</b>       | \$0      | \$25   | N/A                          | \$25         | N/A                            | N/A                                     |
| 17 Student Member<br><i>(CME/CE credit not tracked or awarded)</i> | <b>Deluxe</b>       | \$0      | \$25   | N/A                          | \$25         | N/A                            | N/A                                     |
| 21 AAPM Member   | <b>Deluxe</b>       | \$150    | \$300  | \$450                        | \$150        | N/A                            | N/A                                     |

### Non-Members

Code Category

|  |                  |         |         |         |       |         |       |
|--|------------------|---------|---------|---------|-------|---------|-------|
| 14 Non-Member Physician<br>a. radiologist<br>b. radiologic scientist<br>c. non-radiologist physician   | <b>Premium</b>   | \$1,100 | \$1,450 | \$1,600 | \$600 | N/A     | \$325 |
| 15 Non-Member Resident/Trainee <i>(Verification required)</i>  | <b>Deluxe</b>    | \$400   | \$750   | N/A     | \$600 | N/A     | \$325 |
| 18 Non-Member Student <i>(Verification required)</i><br><i>(CME/CE credit not tracked or awarded)</i>  | <b>Deluxe</b>    | \$0     | \$600   | N/A     | \$600 | N/A     | N/A   |
| 22 Non-Member Physicist  | <b>Premium</b>   | \$1,100 | \$1,450 | \$1,600 | \$600 | N/A     | \$325 |
| 23 Radiology Support Personnel <i>(Verification required)</i><br>a. technologist<br>b. engineer<br>c. radiology business manager<br>d. radiology administrator<br>e. radiology/nurse practitioner<br>f. educator<br>g. architect<br>h. government employee (non-physician)<br>i. information technology/system support<br>j. telemedicine/communications specialist<br>k. facility manager<br>l. assistant (physician/radiologist) | <b>Standard</b>  | \$400   | \$750   | \$900   | \$600 | N/A     | \$325 |
| 24 Hospital or Facility Executive<br>a. hospital or facility administrator<br>b. legal (in-house counsel)<br>c. officer (CEO, CFO, CIO, COO)<br>d. purchasing<br>e. other senior-level personnel   | <b>Executive</b> | \$1,100 | \$1,450 | \$1,600 | \$600 | \$1,200 | \$325 |
| 25 Commercial Research & Development   | <b>Standard</b>  | \$1,100 | \$1,450 | \$1,600 | \$600 | \$1,200 | \$325 |
| 27 Industry Personnel<br>a. distributor<br>b. manufacturer<br>c. prospective exhibitor<br>d. other   | <b>Standard</b>  | \$1,100 | \$1,450 | \$1,600 | \$600 | \$1,200 | \$325 |
| 31 Healthcare Consultant<br>a. attorney<br>b. computer analyst<br>c. financial analyst<br>d. purchasing<br>e. staffing/recruitment<br>f. other   | <b>Standard</b>  | \$1,100 | \$1,450 | \$1,600 | \$600 | \$1,200 | \$325 |

# MEETING ESSENTIALS

## Meeting Materials

### Name Badge

Your meeting badge serves as a virtual business card and is encoded with the name, institution, title, address, email address, phone/fax numbers and demographic information you supplied during registration. You can scan it to leave information with exhibitors.

Badges are now equipped with beacon technology that eliminates the need to verify attendance, simplifies the CME process and links users to Meeting Central ([Meeting.RSNA.org](http://Meeting.RSNA.org)) for an enhanced meeting experience. While RSNA will never share, rent or sell the information collected on your badge, you can opt out of this technology by visiting any registration location.

### Ribbon Pick Up

All badge ribbons for committee, council or group work will be distributed onsite at RSNA 2017. Ribbons will be available at a self-serve ribbon wall located in Membership Resources in the Connections Center. Staff will be onsite to assist members.

### RSNA Program in Brief, Official Meeting Bag, Lanyard and Pocket Guide

The printed RSNA 2017 Program in Brief, official meeting bag and Pocket Guide are available at the self-serve distribution areas located in the Lakeside Center East, Level 2, the North Building, Level 2 and the South Building, Level 1.

In addition to the printed RSNA 2017 Program in Brief, RSNA offers an online program at [Meeting.RSNA.org](http://Meeting.RSNA.org) with a user-friendly search engine to find presentations and build your My Agenda. Please note 2017 will be the last edition of the printed Program in Brief. Available onsite, the RSNA 2017 Pocket Guide is an easy-to-use reference guide to course and event information, floor plans at McCormick Place, transportation and dining.

### Technical Exhibits Guide

The Technical Exhibits Guide includes floor plans, exhibitor list, food service and other exhibit floor activities. The guide is distributed in bins located at exhibit hall entrances.

## Online Resources

### Meeting Central

Optimized for tablets and mobile devices, the Meeting Central site at [Meeting.RSNA.org](http://Meeting.RSNA.org) is an essential resource for navigating RSNA 2017. Explore a host of valuable information, including:

- RSNA Meeting Program — Browse the listings of educational courses, scientific presentations and more. Search for courses, sessions and events by keyword, title or name of presenter, using helpful filters by day, session type and subspecialty.
- Technical exhibitors list — Learn about the companies unveiling the latest equipment and technology. New this year, you can search the exhibitor listing by product category or name to find the companies you are looking for and add them to your agenda. You can also schedule an appointment with

exhibitors that upgraded their listings. They are noted with the Featured Exhibitor icon.

- Virtual Meeting program — Browse virtual sessions available live or on demand either onsite or virtually from anywhere across the globe.
- My Agenda — Build your calendar and stay organized with a handy schedule personalized to your needs — perfect for planning ahead — and access Credit Eval (see below).

### Credit Eval

Click My Agenda to access Credit Eval to evaluate RSNA 2017 courses and claim credits online via your laptop or mobile device, or at any Internet Station in McCormick Place. You can begin your evaluations as early as 10 minutes after courses start, claim your credits onsite and walk away with printed certificates.

For RSNA members, credits are automatically added to the RSNA CME Repository. Assistance is available at the Digital Support desk in the Connections Center.

### RSNA 2017 Meeting App

Download the RSNA 2017 Meeting App for iPhone, iPad and Android smartphones to access and explore the Meeting Program even when you are offline. Browse the technical exhibitor list, access maps to navigate McCormick Place and customize your daily meeting schedule with My Agenda. Available via the App Store and Google Play, the RSNA 2017 Meeting App is sponsored by Siemens Healthineers.

## Stay Connected

### Internet Stations

Computers will be available at internet stations throughout McCormick Place for use in accessing Meeting Central and Credit Eval.

### Free Wifi

Free wireless connectivity is available throughout McCormick Place. Note: these wireless networks are not secure and should not be used for sending sensitive information.

### Charging Stations

Charge your laptop, phone or other mobile device at one of the Charging Stations located throughout McCormick Place.

## Professional Portrait Studio

Visit the North Lobby, Level 3, for this popular RSNA attraction to get a free professional headshot to use for CVs, passports and social media profiles. Photos are immediately emailed to you.



## Keeping Attendees Informed

### Social Media Connection

Join — or start — the conversation on social media at RSNA 2017. Follow RSNA on Facebook, Twitter, Instagram and LinkedIn to get the latest news, connect with colleagues and share your favorite meeting moments. Use hashtag #RSNA17.

Throughout the meeting, RSNA will be sharing updates from select sessions on Twitter and video interviews and tours on Facebook Live. Trainees can connect with their fellow Twitter users in-person at the RFC Tweetup on Tuesday, Nov. 28 at 4:30 p.m. in the Residents and Fellows Lounge.

### Daily Bulletin

Stay connected to all things RSNA 2017 through the print and online versions of the *Daily Bulletin*, the official newspaper of the annual meeting. Featuring news from the meeting, the *Daily Bulletin* is available in bins throughout McCormick Place.


The digital *Daily Bulletin* is available on the RSNA 2017 mobile app and online at [RSNA.org/Bulletin](http://RSNA.org/Bulletin). New this year, more articles will be available online ahead of print, and additional features include interactive quizzes and polls.

The Technical Exhibits Focus section, published Sunday through Wednesday in the *Daily Bulletin*, features new radiologic technology and services demonstrated by technical exhibitors at the meeting.

Get alerts on *Daily Bulletin* stories through social media at #RSNA17 on Facebook ([facebook.com/RSNAfans](https://www.facebook.com/RSNAfans)), Instagram (RSNAgram) or Twitter (@RSNA).

### Get Help — Onsite and Online

RSNA offers physical and virtual Information Desks to aid attendees throughout the annual meeting.

Throughout McCormick Place, look for the icon  to find help. Visit one of the RSNA Information Desks in the Grand Concourse, Level 3, or in the Lakeside Center East, Level 3, where RSNA staff can assist with general information.

## Explore an Expanded Menu of Dining, Drinking Options

Attendees looking to sample Chicago's diverse array of eateries can visit the Restaurant Reservation Desk in the Grand Concourse for restaurant recommendations, reservations and concierge services. Visit the Dining Guide at [Meeting.RSNA.org](http://Meeting.RSNA.org).

Inside McCormick Place, patrons can choose from a variety of options:

### Bistro RSNA — Eat, Meet and Network

With an extensive gourmet menu and ample seating, Bistro RSNA is a convenient option to sit down to a comfortable lunch and network with colleagues.

Attendees can choose from three convenient locations: Enjoy a sit-down lunch in the Technical Exhibits, South Building & North Building and in the Learning Center, Lakeside Center East. Bistro RSNA is open Sunday, Nov. 26, through Wednesday, Nov. 29, 11 a.m. to 2:30 p.m.

A brunch menu will be offered Thursday, Nov. 30, from 10:30 a.m. to 1:30 p.m., in all three locations.

Save by purchasing your tickets online in advance for just \$22/ticket. Tickets purchased onsite are \$24. For daily menu options and to purchase tickets in advance, visit [bistroticket.com/rsna](http://bistroticket.com/rsna).

### McCormick Place Eateries

Favorite dining options include Starbucks, Jamba Juice, Connie's Pizza, McDonald's, Ambrosia Café, Kosher Express, 23rd Street Café, Lakeside Café, Dunkin' Donuts, Garrets Popcorn, Luzita's Street Style Tacos, Market Cart, Midwest Grilled Cheese and more.



# LEARNING CENTER FEATURES THOUSANDS OF POSTERS AND EXHIBITS

Located in Lakeside Center East, Level 3, the Learning Center houses thousands of education exhibits and scientific posters covering a range of subspecialties. Scientific posters will be displayed within each learning community. During the lunch hour, authors will be present for Poster Discussions. Visit Meeting Central for days/times.

## CME Learning Checkpoint

This interactive activity will allow attendees to check out nine award-winning hard-copy exhibits from RSNA 2016. Attendees can study an exhibit and take the corresponding quiz on their mobile devices or laptops. Attendees receive 0.5 *AMA PRA Category 1 Credit*™ for each completed quiz.

## Quantitative Imaging Biomarkers Alliance (QIBA)

The QIBA Kiosk will provide information about the ongoing coalition efforts among clinicians, researchers, government agencies, industry and RSNA to advance the practice of radiology from image interpretation to quantitation. Meet the Experts presentations will be held throughout the week.

## Quality Improvement (QI) Storyboard Walks

Join experts in quality improvement in radiology, as they walk through the QI storyboards, highlighting examples of great work and sound methodology. Bring your walking shoes and come prepared for an interactive session. Those who are interested in leading and publishing QI projects in the coming months and years will find this especially valuable. The poster walks will be held Monday and Tuesday, Nov. 27 and 28, at 3 p.m. and 4 p.m. respectively, in the Quality Storyboard section.

## Quantitative Imaging Reading Room

Explore products that integrate quantitative analysis into image interpretation. Exhibits feature informational posters, computer-based demonstrations and “Meet the Experts” presentations.

## 3-D Printing Demonstration and Showcase

In addition to many hands-on courses related to 3-D printing, the Learning Center will include theater poster presentations on 3-D printing throughout the week and a demo area with additional information. A virtual reality demonstration provides a glimpse of the research and clinical potential made possible with newly affordable and remarkably compelling virtual reality technology.

The exhibit features demonstration of medical virtual reality tools including instructive clinical examples of using virtual reality for radiology exams, education, surgical planning and networked collaboration. Visitors will have the opportunity to experience 3-D medical models in virtual reality, travel inside a virtual colonoscopy with a CT roadmap and interact with medical models and scan set images in re-imagined, intuitive and exciting ways.

## NCI Image Perception Research

For the second year, the National Cancer Institute (NCI) will be conducting studies on radiologic image perception at RSNA's annual meeting. Attendees will be able to learn about this important area of research and, if they wish, participate in the studies as volunteers in a lab environment. The NCI Image Perception Lab is located near the Residents' Lounge.

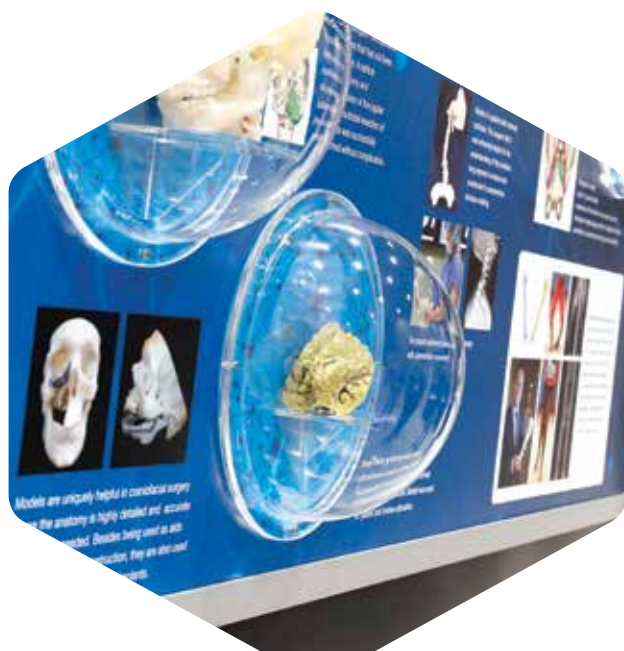
## NEW Ask a Graphic Media Expert

Attendees looking for assistance with graphic arts for presentations or publications can visit the Learning Center and speak with a graphic media expert. Experts will be on hand to answer questions on topics such as preparing images for publication, working in a PowerPoint template and adding videos to a presentation.

## NEW Machine Learning Community

A destination point for machine learning (ML)-related activities, the Machine Learning Community will be anchored by the RSNA Deep Learning Classroom presented by NVIDIA DLI. Attendees will have a hands-on opportunity to engage with ML learning tools, write algorithms and improve their understanding of emerging ML technology.

The Machine Learning Community will also feature backboard posters and a National Cancer Institute Exhibit. Read a full report on the growth of ML at RSNA 2017 and related activities on Page 12.



# CONTINUING EDUCATION CREDITS AVAILABLE

RSNA is accredited by the Accreditation Council for Continuing Medical Education (ACCME) to provide continuing medical education for physicians.

RSNA designates this live activity for a maximum of 98.50 *AMA PRA Category 1 Credits*<sup>™</sup>. Physicians should claim only credit commensurate with the extent of their participation in the activity. Attendees can evaluate CME courses and claim credit electronically. As the meeting approaches, RSNA will send information on how to claim CME instantly from the courses attendees take.

The Commission on Accreditation of Medical Physics Education Programs (CAMPEP) has approved the direct transfer of *AMA PRA Category 1 Credits*<sup>™</sup> to Medical Physics Education Programs (MPCEC) on a credit-for-credit basis for medical physicists. RSNA is an American Registry of Radiologic Technologists (ARRT)-approved Recognized Continuing Education Evaluation Mechanism Plus (RCEEM+) and will provide Category A+/A continuing education credits for radiologic technologists and radiologist assistants.

## Self-Assessment Modules (SAMs)

Fifty-four courses have been approved for SAMs during RSNA 2017. Each RSNA in-person SAM is available for 1.5 SAM

credits and 1.50 *AMA PRA Category 1 Credits*<sup>™</sup>. RSNA annual meeting in-person SAMs are accredited by the MOC program of the Royal College of Physicians and Surgeons of Canada and approved by the Canadian Association of Radiologists.

**New in 2017:** All courses designated for SAM credit at RSNA 2017 will require attendees to use their personal device to complete the required test questions during the live session.

## Academy of Radiology Leadership and Management

The Academy of Radiology Leadership Management (ARLM), sponsored by five participating radiology education societies including RSNA, allows radiologists to enhance their careers and develop professional skills. Receive an ARLM Certificate of Achievement by earning 50 education credits across a spectrum of core learning domains including financial skills, human resources, professionalism, legal/contracting and more.

Radiology Leadership Institute course credit will also be available for select courses at RSNA 2017.



# TECHNICAL EXHIBITS SPOTLIGHT WORLD'S LATEST INNOVATIONS

More than 650 leading manufacturers, suppliers and developers of medical information and technology help make the RSNA Technical Exhibit halls the ideal setting to engage with industry experts and discover the latest medical imaging products and support services designed to streamline operations and enhance patient care. Shop and compare equipment supplies, devices and software in two halls: Hall A in the South Building and Hall B in the North Building.

## **NEW** Machine Learning Showcase

The new Machine Learning Showcase offers attendees the chance to learn more about this emerging area and network directly with companies at the forefront of the latest technology. Presentations will take place each day. The showcase is located in the North Building.

*Sponsored by:* Carestream Health, Google Cloud and Zebra Medical Vision.

## **NEW** Start-up Showcase

Visit the Start-up Showcase in the North Building to explore the latest medical imaging innovations and connect with emerging companies positioned to bring new products and services to market.

## First-Time Exhibitor Pavilion

First-time exhibitors demonstrating new products and services will be featured in a showcase area inside the North Hall. Other first-time exhibitors located throughout the Exhibit Halls will be identified with a First-Time Exhibitor logo.

## Vendor Workshops

Vendors provide hands-on tutorials of commercial software systems in a classroom setting. Refer to the online program for a complete list of Vendor Workshops.

## International Pavilions

Exhibitors from 27 countries are on display at RSNA 2017. Canada (Ontario, specifically), China, France, Germany and Korea have dedicated pavilions to showcase technology and services from their countries.

### TECHNICAL EXHIBITS HOURS

Sunday, Nov. 26 to  
Wednesday, Nov. 29  
10 a.m. to 5 p.m.

Thursday, Nov. 30  
10 a.m. to 2 p.m.

## Publisher's Row

Visit with top medical publishers for a look at the latest releases in educational materials across all areas of medical imaging.

## Bistro RSNA — Eat, Meet and Network

With an extensive gourmet menu and ample seating, Bistro RSNA is a convenient option to sit down to a comfortable lunch and network with colleagues.

Purchase your tickets in advance for \$22 per meal. For more information, visit [bistroticket.com/rsna](http://bistroticket.com/rsna).



**Sunday, Nov. 26, to Wednesday, Nov. 29**

**11 a.m. – 2:30 p.m.**

*Technical Exhibits, North & South Buildings and in the Learning Center, Lakeside Center East.*

**Special Brunch**

**Thursday, Nov. 30**

**10:30 a.m. – 1:30 p.m.**

*Technical Exhibit Halls, North & South Building and in the Learning Center, Lakeside Center East.*

**Bistro RSNA is again offering this hearty brunch menu on Thursday only.**





# RSNA 2017 VIRTUAL MEETING

## Experience the Meeting from Virtually Anywhere

For those who want to access content from anywhere in the world — or who want to see more while attending RSNA 2017 — the Virtual Meeting is the answer. This year's meeting features an incredible array of expanded content, longer availability, CME credit for live sessions, and a select number of CME-eligible courses on demand.

### Valuable Content

With over 100 live-streamed and on-demand courses, the Virtual Meeting gives you access to educational courses, plenary sessions and additional meeting content.

### CME Credit

RSNA 2017 Virtual Meeting offers CME credit for all live-viewed sessions upon completion of a course evaluation or submitting correct diagnoses for Cases of the Day and select on-demand sessions upon successful completion of a test and course evaluation.

- Live sessions must be viewed at the time of the course to be eligible for CME credit.
- Content captured during live sessions will be made available for on-demand viewing within 24 hours of the live session, and will remain available through February 28, 2018.
- Only those courses designated as CME-eligible on demand will qualify for CME credit when viewed on demand following successful completion of a test and course evaluation.

### Your Time, Your Place, Your Meeting, Your Community

With the Virtual Meeting, you have the power to maximize your meeting experience—when and where you choose! What's more, join the virtual community with live chat capabilities allowing you to discuss course content with colleagues from across the globe. Register now to get the most from RSNA 2017.

### Dates and Hours — Extended Access

The Virtual Meeting is available beginning at 8 a.m. CT on Saturday, Nov. 25, with sessions beginning that afternoon. Live programming will run simultaneous to the

RSNA 2017 annual meeting, which ends on Friday, Dec. 1. After that date, RSNA will offer extended access to all Virtual Meeting programming on demand through Feb. 28, 2018, at 4 p.m. CT.

### Cost

Flexible pricing allows you to attend the RSNA 2017 Virtual Meeting in conjunction with the live annual meeting or as a stand-alone product. Visit [RSNA.org/Registration-Packages](http://RSNA.org/Registration-Packages) to learn more. Retired RSNA members receive free access.

### Live Content Available for CME Credit

RSNA designates this live activity for a maximum of 85.50 *AMA PRA Category 1 Credits™*. Physicians should claim only credit commensurate with the extent of their participation in the activity.

To qualify for CME credit for live (virtual) participation, document your attendance by evaluating the courses in which you participate; then, claim credit online using CreditEval. In order to receive credit, you must attend the entire session.

The virtual session will automatically track your attendance. For each course in which you participate virtually, a link will be made available at the conclusion of the course. Claim credit through the posted credit evaluation deadline, which is typically one week after the end of RSNA 2017.

Once you have evaluated all eligible courses, follow the prompt to print your CME certificate for your live Virtual Meeting courses. For RSNA members, credits will automatically be applied to the RSNA CME Repository.

### CME-Eligible Content On Demand

Participants that watch CME-eligible on-demand courses will be prompted to

complete a test on the material after viewing. After achieving a score of 80 percent or better, you will be asked to complete a course evaluation. Once these two requirements are met, you will receive an email with your on-demand CME certificate attached. One on-demand CME certificate is sent for each on-demand course completed. You may also view your certificates in the CME Repository for RSNA members.

RSNA extends its appreciation to instructors who have provided questions and references for these courses, making on-demand CME possible. AMA considers on-demand programming as an Enduring Material and requires assessment of the learner by patient management case studies, a post test and/or application of new concepts in response to simulated problems.

### Cases of the Day

Virtual Meeting participants may submit answers for Cases of the Day by midnight CT on the day the case is presented at the annual meeting. Correct answers will be revealed the following morning. Virtual Meeting participants who submit the correct answer will receive 0.5 *AMA PRA Category 1 Credits™*.

### More Information

Contact [virtual@rsna.org](mailto:virtual@rsna.org), or call 1-630-571-2670 or toll-free 1-800-381-6660 from the United States or Canada, between the hours of 8 a.m. and 4 p.m. CT Monday through Friday.

Virtual Meeting registration runs concurrent to RSNA 2017 registration and will continue through Feb. 28, 2018. Register at [RSNA.org/Register](http://RSNA.org/Register).





# VISIT THE RSNA CONNECTIONS CENTER

The RSNA Connections Center offers a wide range of resources to enhance your meeting experience. Whether you have questions about your membership, are interested in donating to the Research & Education (R&E) Foundation, or need a place to charge your phone, the Connections Center has you covered.

## Membership & Resources

Staff will be available to answer questions about RSNA services including:

### **NEW** Ribbon Pick-Up

Volunteer recognition ribbons will no longer be mailed to attendees. Ribbons will be available at a self-serve ribbon wall in the Connections Center. Instructions will be emailed to ribbon recipients.

### • **RSNA Online Learning Center**

Check out the newly-upgraded online education platform, RSNA Online Learning Center, featuring more than 600 online SAM-CME activities and an enhanced, mobile-friendly user interface.

### • **Career Connect**

Seek assistance if you're looking for a job or need to fill one.

### • **Image Wisely®**

Take the pledge with Image Wisely® to use optimal radiation dose in medical imaging.

### • **International Affairs**

Learn about RSNA's international outreach programs.

### • **Journals and News**

Check out all of RSNA's print, online and mobile publications and learn about journal subscriptions.

### • **Membership**

Get answers to your questions about membership, dues payments and maximizing your benefits.

### • **Radiology Cares®: The Art of Patient-Centered Practice**

Access RSNA patient-centered practice resources.

### • **RadiologyInfo.org®**

Learn about this comprehensive patient information website.

## Information Desk

Visit RSNA staff at the Information Desk for answers to all your questions about RSNA 2017.

## Digital Support

RSNA technology experts are available to provide one-on-one digital help with Meeting Central, the RSNA meeting app, or the Virtual Meeting.

## RSNA Shop

The RSNA Shop is your go-to resource for RSNA-branded merchandise and apparel. New this year: adult coloring books and photo frames, as well as a special edition Research & Education (R&E) coffee mug, with proceeds benefitting the Foundation.





## Discovery Theater Features Music, Performance Acts, Interactive Discussions

Stop by the Discovery Theater throughout the week for unique discussions on RSNA programs and special musical and performance acts. New this year: the Diagnosis Live™ Resident Competition will feature four residency programs in a head-to-head challenge for the ultimate residency program bragging rights. View the full schedule and add events to My Agenda at [Meetings.RSNA.org](http://Meetings.RSNA.org). Events include:

### Performances:

- Milwaukee Hot Club (French Jazz)*
- Laura Bretan (Opera)*
- Rio Bamba (Latin)*
- Chicago Kingsnakes (Chicago Blues)*
- Martin Metzger Flamenco Ensemble*

### Presentations include:

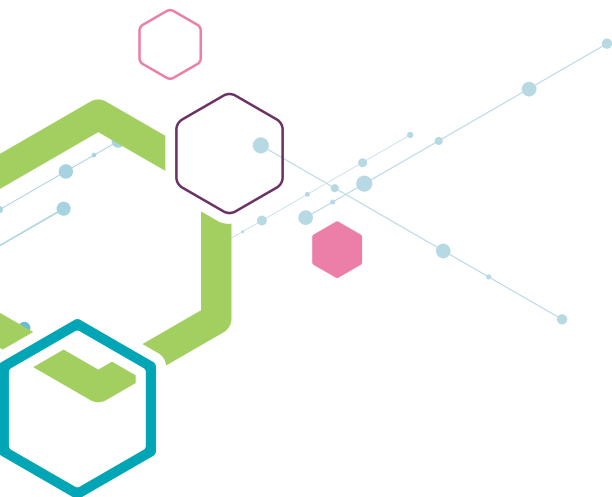
- First-Time Attendee Orientation*
- Navigating RSNA (in Portuguese, French, Spanish)*
- Image Wisely®*
- RSNA 3-D Printing SIG*

## RSNA Image Contest

The RSNA Image Contest allows medical imaging specialists a chance to share their artistic flair with their peers from around the globe. You can vote for your favorites at [RSNA.org/Image-Contest](http://RSNA.org/Image-Contest) from Oct. 1-31. The top five images for this year's categories – Radiology Art, Radiology Hobbies and Best Photo – will receive recognition at [RSNA.org/Image-Contest](http://RSNA.org/Image-Contest) and in the RSNA Connections Center.

## R&E Donor Suite

Learn more about the Research and Education (R&E) Foundation activities, including the Inspire-Innovate-Invest Campaign. Read about current grant and award recipients, as well as individual, private practice and corporate donors. Attendees with a donor ribbon and those who contribute at least \$300 onsite enjoy exclusive access to the Donor Suite, which features computers, a coat room, comfortable furniture and light refreshments.



# RESIDENT AND FELLOW SESSIONS, NETWORKING OPPORTUNITIES

Highlighted by the annual RSNA Resident and Fellow Symposium, RSNA 2017 offers a full roster of programming geared toward residents and fellows, along with networking opportunities. RSNA annual meeting registration is free for members-in-training.

## RSNA Resident and Fellow Symposium

The RSNA Resident and Fellow Symposium will be held Tuesday, Nov. 28, during RSNA 2017. Go to [Meeting.RSNA.org](http://Meeting.RSNA.org) to add the symposium to My Agenda.

*Topics include:*

### Session 1: Finding Your Career Path

- “What RSNA Has to Offer Members-in-Training”
- “Panel Discussion: Academic, Private Practice, Hybrid Model, Telerad, Interventionalist”

### Session 2: Landing the Job You Want

- “Interview to Win — How to Land the Job You Want”
- “Contract Negotiations”

### Session 3: Tips for a Successful Career

- “Challenging Conventional Wisdom,”
- “Tips for Successful Leadership: What I Wish I Knew Back Then”
- Q & A

Other programming geared toward residents and fellows includes interactive Diagnosis Live™ sessions, what’s new from the American Board of Radiology (ABR), case-based interactive competition and review sessions and an RSNA Professionalism Committee-sponsored session, “The Newly Hired Radiologist: Lessons for Aspiring, New and Experienced Radiologists.”



## Residents Lounge

RSNA members-in-training and non-member residents are offered a place to relax and network while enjoying complimentary refreshments. The lounge is open Sunday through Thursday, 8 a.m. to 6 p.m.

## Residents Reception

Offered in conjunction with the American College of Radiology, the reception gives residents a chance to eat, mix and mingle with their peers and network with longtime RSNA members and leaders in radiology. The reception will be held Monday, Nov. 27, from 4 to 5 p.m., in the Hyatt Regency McCormick Place.

## Resident and Fellow Tweetup

The event will be held Tuesday, Nov. 28, at 4:30 p.m. in the Resident and Fellow Lounge.

## Diagnosis Live™ Resident Competition

**NEW** On Monday, the Discovery Theater in the Connections Center will host the Diagnosis Live™ Resident Competition, which will feature four residency programs in a head-to-head challenge for the ultimate residency program bragging rights.

## 5K FUN RUN TO SUPPORT THE RSNA R&E FOUNDATION

**Nov. 28 at 6:30 a.m.**

Run, jog or walk in the 2017 Fun Run to support education and radiology research. All proceeds benefit the RSNA R&E Foundation, so enjoy a run with your colleagues for a good cause. Add the Fun Run to your RSNA 2017 registration. Participants receive a commemorative T-shirt, while supplies last, and the fully tax-deductible donation benefits the RSNA R&E Foundation. In case of inclement weather, the Fun Run may be canceled. All Fun Run fees are non-refundable.

*Sponsored by Konica Minolta Healthcare.*



## EXPLORE CHICAGO AT RSNA 2017

Make sure to schedule some time to explore the amazing sights and sounds of Chicago through RSNA’s Tours and Events.

Highlights include a Holiday Lights Trolley Tour, Behind the Scenes at the Field Museum Lunch, Create your Own Deep Dish Pizza at Lou Malnati’s, The Pearl Fishers at the Lyric Opera, a Millennium Park Walking Tour and much more.

Information is available at [RSNA.org/Tours-and-Events](http://RSNA.org/Tours-and-Events). During the meeting, attendees can visit the tour desk in the Grand Concourse Saturday through Wednesday.