

# RSNA 2020 NEW JOURNAL PRICING

Tier Pricing	Radiology: Artificial Intelligence	Radiology: Cardiothoracic Imaging	Radiology: Imaging Cancer	All Three New Journals
1	\$345.00	\$345.00	\$345.00	\$828.00
2	\$550.00	\$550.00	\$550.00	\$1,320.00
3	\$790.00	\$790.00	\$790.00	\$1,896.00
4	\$1,185.00	\$1,185.00	\$1,185.00	\$2,844.00
5	Contact <a href="mailto:license@rsna.org">license@rsna.org</a>			
Individual Subscription	\$170.00	\$170.00	\$170.00	\$408.00

## TIER INFORMATION:

Tiers 1-4 apply to single site institutions only. Multi-site institutions fall under Tier 5 and require a licensed subscription.

## Academic

- 1 Associate college (community, technical, further education (UK))
- 2 Baccalaureate or master's level college/university and nursing, veterinary or dental school
- 3 Research university without affiliated medical school or patient care facilities
- 4\* Medical school or university with a single medical school or medical center
- 5
  - Academic consortia or research institute
  - Research university with multiple medical schools and/or medical centers or hospitals
  - Universities that share e-resources

\*All medical schools within hospitals must use academic rates.

## Hospital

- 1 1-400 beds
- 2 401-750 beds
- 3 751-1,000 beds
- 4 1,001+ beds
- 5 Hospital System

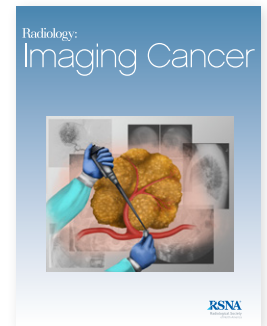
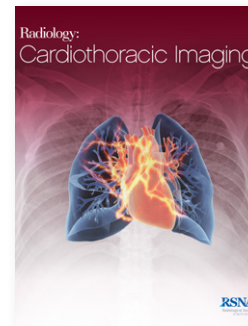
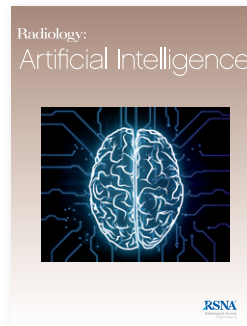
## Public/Non-Profit

- 1 Community public library (small scale), general reference public library, non-profit administration office
- 5 Government agency and ministry, research institute, state or national public library

## Corporate

- 5
  - Corporate (including private practices and law firms)
  - Private Practice (including medical groups of participating doctors and medical professionals)

## THE WORLD'S BEST RADIOLOGIC SCIENCE



## RSNA LICENSES

RSNA Licenses grant expanded user rights and are available to all subscribers. Tier 5 institutions are required to license RSNA content. To request a quote, please provide the following information to [license@rsna.org](mailto:license@rsna.org):

- ▶ Corporate, Government Agency, Private Practice, Research Institute, State or National Public Library: Number of relevant FTEs and total FTEs.
- ▶ Consortia: Full name and address for each participating institution.
- ▶ Hospital System: Address of each location and corresponding number of beds.

Prices are in effect from January 1, 2020 through December 31, 2020.

For more information, please visit [RSNA.org/Journals](http://RSNA.org/Journals)

**RSNA Journals™**

For more information, contact RSNA Publications at  
1-630-590-7770 or [subscribe@rsna.org](mailto:subscribe@rsna.org)