

RSNA 2020 JOURNAL PRICING

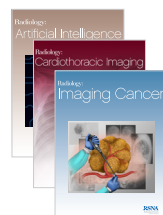
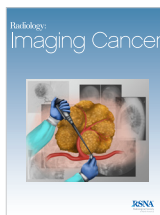
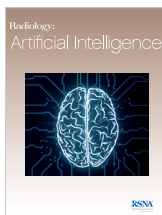


Tier Pricing	<i>Radiology</i>	<i>RadioGraphics</i>	<i>Radiology & RadioGraphics</i>	<i>Radiology Legacy</i>
1	\$792 ⁰⁰	\$463 ⁰⁰	\$1,066 ⁷⁵	\$4,420 ⁰⁰
2	\$1,271 ⁰⁰	\$784 ⁰⁰	\$1,746 ⁷⁵	\$4,420 ⁰⁰
3	\$1,829 ⁰⁰	\$1,103 ⁰⁰	\$2,492 ²⁰	\$4,420 ⁰⁰
4	\$2,744 ⁰⁰	\$1,656 ⁰⁰	\$3,740 ⁰⁰	\$4,420 ⁰⁰
5	Contact license@rsna.org	Contact license@rsna.org	Contact license@rsna.org	Contact license@rsna.org
Individual Subscription	\$392 ⁰⁰	\$215 ⁰⁰	\$455 ²⁵	N/A

PRINT PACKAGES

Print may be added to any online *Radiology* or *RadioGraphics* subscription and may not be purchased separately.

	Print Packages			Single Issues		
	<i>Radiology</i>	<i>RadioGraphics</i>	Both Journals	<i>Radiology</i>	<i>RadioGraphics</i>	<i>RadioGraphics</i> Special Issue
North American subscribers (USA, Canada, Mexico)	\$292 ⁰⁰	\$167 ⁰⁰	\$459 ⁰⁰	\$40 ⁰⁰	\$40 ⁰⁰	\$50 ⁰⁰
International Subscribers	\$390 ⁰⁰	\$228 ⁰⁰	\$618 ⁰⁰	\$55 ⁰⁰	\$55 ⁰⁰	\$65 ⁰⁰



Tier Pricing	<i>Radiology: Artificial Intelligence</i>	<i>Radiology: Cardiothoracic Imaging</i>	<i>Radiology: Imaging Cancer</i>	<i>All Three Subspecialty Journals</i>
1	\$345 ⁰⁰	\$345 ⁰⁰	\$345 ⁰⁰	\$828 ⁰⁰
2	\$550 ⁰⁰	\$550 ⁰⁰	\$550 ⁰⁰	\$1,320 ⁰⁰
3	\$790 ⁰⁰	\$790 ⁰⁰	\$790 ⁰⁰	\$1,896 ⁰⁰
4	\$1,185 ⁰⁰	\$1,185 ⁰⁰	\$1,185 ⁰⁰	\$2,844 ⁰⁰
5	Contact license@rsna.org	Contact license@rsna.org	Contact license@rsna.org	Contact license@rsna.org
Individual Subscription	\$170 ⁰⁰	\$170 ⁰⁰	\$170 ⁰⁰	\$408 ⁰⁰

TIER INFORMATION:

Tiers 1-4 apply to single site institutions only. Multi-site institutions fall under Tier 5 and require a licensed subscription.

Academic

- Associate college (community, technical, further education (UK))
- Baccalaureate or master's level college/university and nursing, veterinary or dental school
- Research university without affiliated medical school or patient care facilities
- * Medical school or university with a single medical school or medical center
- Academic consortia or research institute
 - Research university with multiple medical schools and/or medical centers or hospitals
 - Universities that share e-resources

*All medical schools within hospitals must use academic rates.

Hospital

- 1-400 beds
- 401-750 beds
- 751-1,000 beds
- 1,001+ beds
- Hospital System

Public/Non-Profit

- Community public library (small scale), general reference public library, non-profit administration office
- Government agency and ministry, research institute, state or national public library

Corporate

- Corporate (including private practices and law firms)
 - Private Practice (including medical groups of participating doctors and medical professionals)

RSNA LICENSES

RSNA Licenses grant expanded user rights and are available to all subscribers. Tier 5 institutions are required to license RSNA content. To request a quote, please provide the following information to license@rsna.org:

- Corporate, Government Agency, Private Practice, Research Institute, State or National Public Library: Number of relevant FTEs and total FTEs.
- Consortia: Full name and address for each participating institution.
- Hospital System: Address of each location and corresponding number of beds.

Prices are in effect from January 1, 2020 through December 31, 2020.

For more information, please visit RSNA.org/Journals

RSNA Journals™

For more information, contact RSNA Publications at 1-630-590-7770 or subscribe@rsna.org