

ADHD Medication May Affect Brain Development in Children

Released: August 13, 2019

At A Glance

- A common ADHD drug appears to affect the development of the brain's white matter in children.
- Treatment with MPH showed changes in the brain's white matter in boys but not adults or the placebo group.
- Approximately 5.2 percent of American children take medication for ADHD.

OAK BROOK, Ill. — A drug used to treat attention-deficit/hyperactivity disorder (ADHD) appears to affect the development of the brain's signal-carrying white matter in children with the disorder, according to a study published in the journal *Radiology*. The same effects were not found in adults with ADHD.

[download full-size photo](#)



Liesbeth Reneman, M.D., Ph.D.

Methylphenidate (MPH), sold under trade names including Ritalin and Concerta, is a commonly prescribed treatment for ADHD that is effective in up to 80 percent of patients. However, not much is known about its effect on the development of the brain, including the brain's white matter, which is important for learning and brain functions and coordinating communication between different brain regions.

To find out more about MPH's effects on white matter development, Dutch researchers performed a study of 50 boys and 49 young adult men diagnosed with ADHD. All patients were medication-naïve; that is, they had never received MPH prior to the study.

"Previous studies all have tried to statistically control for the effects of ADHD medications," said study senior author Liesbeth Reneman, M.D., Ph.D., from the Department of Radiology and Nuclear Medicine at the Academic Medical Center, University of Amsterdam, the Netherlands. "But we are the first to study medication-naïve patients in this context, which, of course, is crucial if you want to know how ADHD medications affect the developing brain."

Patients received either MPH or a placebo for 16 weeks. Before and one week after treatment cessation, the participants underwent MRI including diffusion tensor imaging (DTI), a technique that helps assess white matter. DTI provides a measure called fractional anisotropy (FA), which is thought to reflect important aspects of white matter such as nerve fiber density, size and myelination—the process of coating nerve fibers to protect the nerve and help it carry signals more efficiently.

In boys with ADHD, four months of treatment with MPH was associated with increased white matter FA. The effects were age dependent, as they were not observed in adults treated with MPH.

"The results show that ADHD medications can have different effects on the development of brain structure in children versus adults," Dr. Reneman said. "In adult men with ADHD, and both boys and adult men receiving placebo, changes in FA measures were not present, suggesting that the effects of methylphenidate on brain white matter are modulated by age."

Dr. Reneman and colleagues are studying the long-term implications of these findings on ADHD behavior, which have yet to be established. Many ADHD patients are on medications for years, so the long-term effects of MPH treatment represent a vital area of research. In the meantime, the researchers want to see tighter regulations for prescribing ADHD medications, since MPH is being prescribed not only to increasing numbers of children, but also at younger ages.

"What our data already underscore is that the use of ADHD medications in children must be carefully considered until more is known about the long-term consequences of prescribing methylphenidate at a young age," Dr. Reneman said. "The drug should only be prescribed to children who actually have ADHD and are significantly affected by it."

According to the Center for Disease Control and Prevention, based on parent reporting, approximately 5.2 percent of American children between the ages of 2 and 17 take ADHD medication.

"White Matter by Diffusion MRI Following Methylphenidate Treatment: A Randomized Control Trial in Males with Attention-Deficit/Hyperactivity Disorder." Collaborating with Dr. Reneman were Cheima Bouziane, M.D., Olena G. Filatova, Ph.D., Anouk Schrantee, Ph.D., Matthan W.A. Caan, Ph.D., and Frans M. Vos, Ph.D.

Radiology is edited by David A. Bluemke, M.D., Ph.D., University of Wisconsin School of Medicine and Public Health, Madison, Wis., and owned and published by the Radiological Society of North America, Inc. (<http://radiology.rsna.org>)

RSNA is an association of over 53,400 radiologists, radiation oncologists, medical physicists and related scientists, promoting excellence in patient care and health care delivery through education, research and technologic innovation. The Society is based in Oak Brook, Ill. (RSNA.org)

For patient-friendly information on brain MRI, visit RadiologyInfo.org.

Images (JPG, TIF):

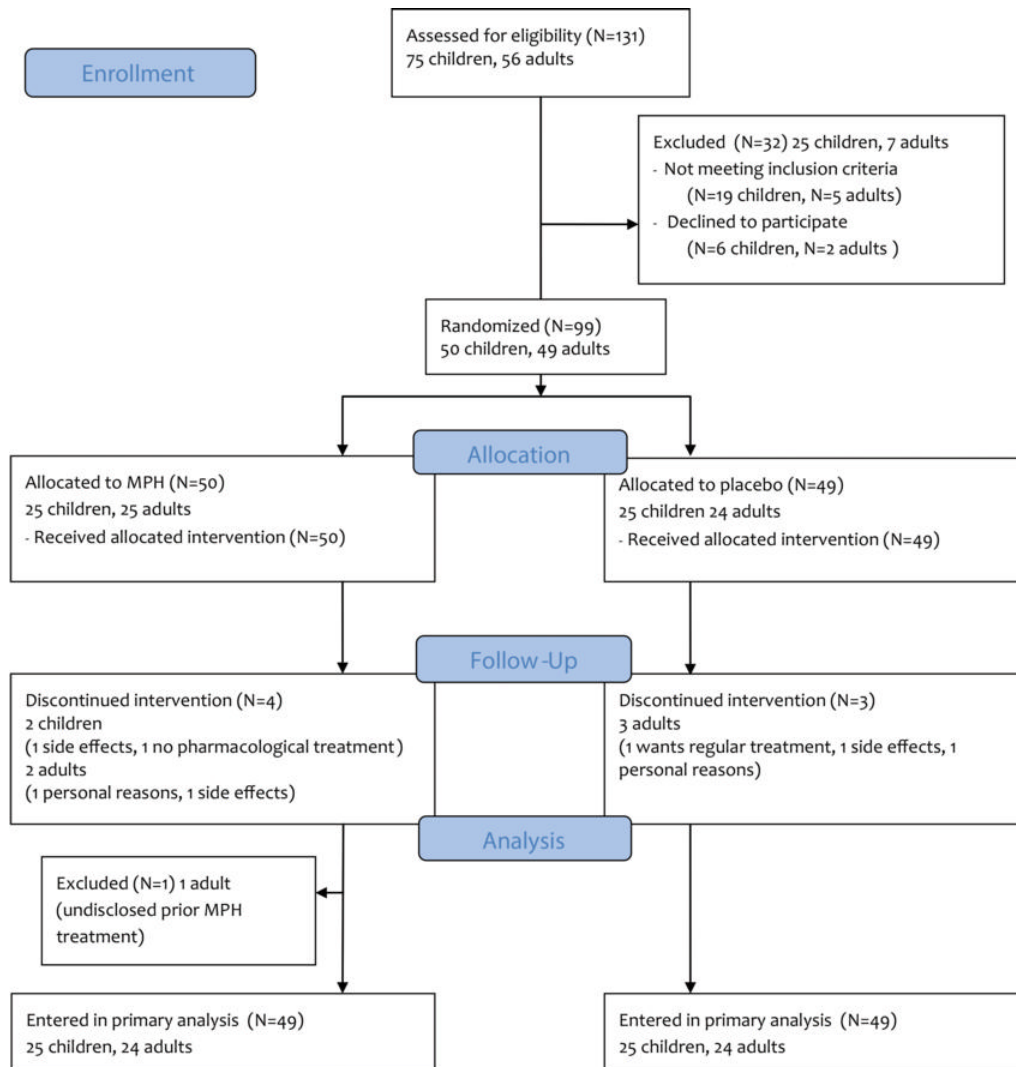


Figure 1. Consolidated Standards of Reporting Trials diagram shows enrollment of the study participants. MPH = methylphenidate

[High-res \(TIF\) version](#)

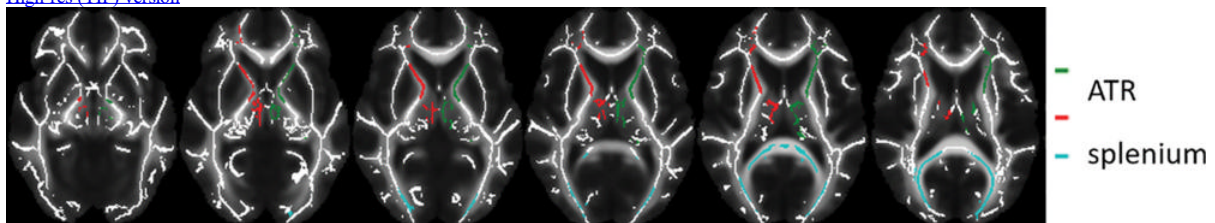


Figure 2. Images of regions of interest (colored lines) in the white matter skeleton representation. Data from left and right anterior thalamic radiation (ATR) were averaged.

[High-res \(TIF\) version](#)

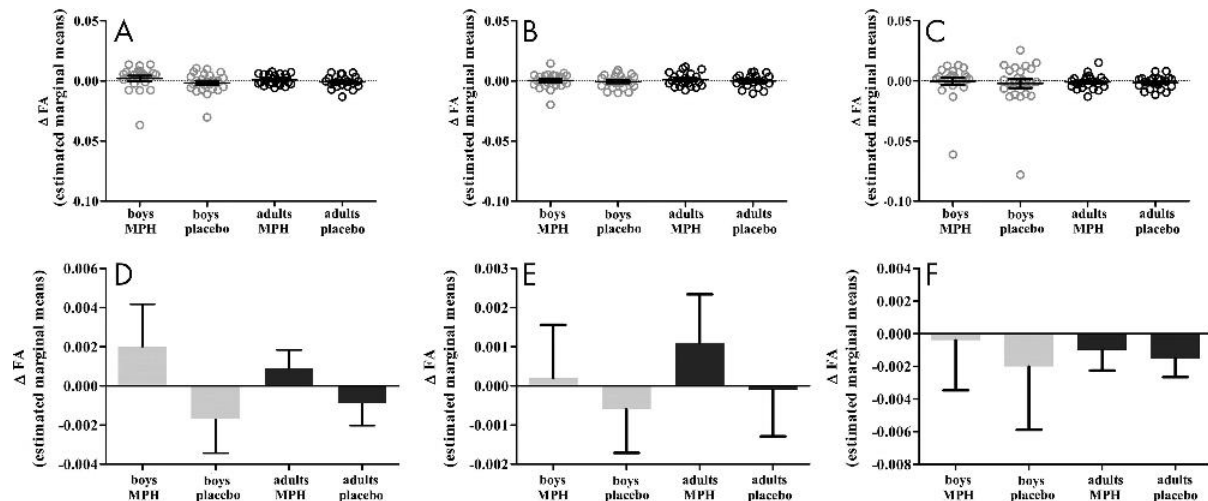


Figure 3. A–F, Graphs show results of region of interest analysis. A–C, Scatterplots of changes in raw fractional anisotropy (FA) values from baseline to after treatment in, A, whole-brain white matter, B, anterior thalamic radiation, and, C, splenium. D–F, Box-and-whisker plots show estimated marginal means and standard errors for change in FA values from baseline to after treatment in, D, whole-brain white matter, E, anterior thalamic radiation, and, F, splenium. Error bars = standard errors of the mean. MPH = methylphenidate.

[High-res \(TIF\) version](#)

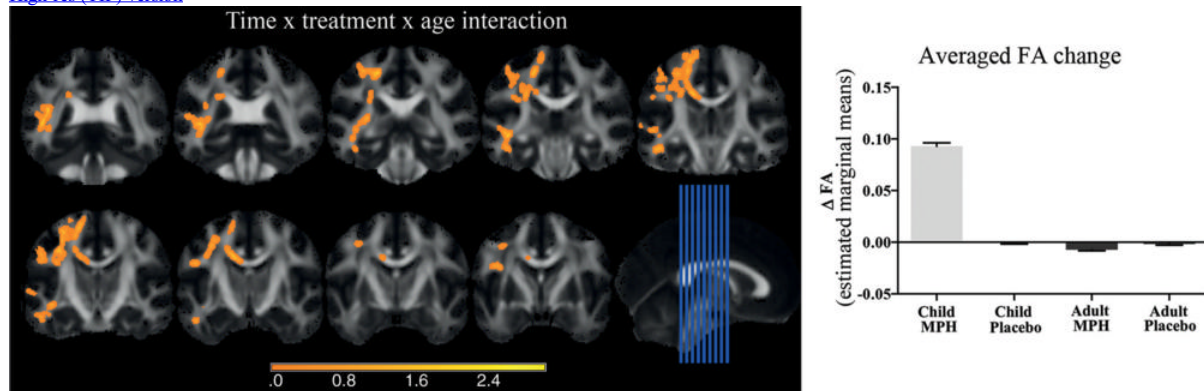


Figure 4. Images show whole-brain voxel-based analysis. Voxelwise fractional anisotropy (FA) comparison by Tract-Based Spatial Statistics software showed significant treatment-by-age interaction effects. Left: Coronal sections that correspond to the sagittal section locations in the image in the bottom row far right. The areas in which the difference between baseline and after treatment in children treated with methylphenidate (MPH) was higher than that in adults treated with MPH are color-coded orange and are located in several association fibers and commissural fibers. Right: Graph shows averaged FA change. Estimated marginal means and standard errors for change in FA values from baseline to after treatment of all significant voxels in the left image were extracted and plotted per group.

[High-res \(TIF\) version](#)

Resources:

[Study abstract](#)