

## Personalized Treatment Benefits Kidney Cancer Patients

Released: January 15, 2019

At A Glance

- Patients who have risk factors for worsening kidney disease may benefit from personalized treatment plans.
- Researchers constructed a simulation model to assess the impact of different treatment approaches in patients with small renal tumors.
- Results showed that information from the model provided guidance on the benefits and risks of active surveillance and helped identify the right treatment for patients.

OAK BROOK, Ill. — Personalized treatment plans may extend life expectancy for early-stage kidney cancer patients who have risk factors for worsening kidney disease, according to a new study published in the journal *Radiology*.

[download full-size photo](#)



Stella K. Kang, M.D., M.S.

Kidney, or renal, tumors are often discovered at an early stage and are frequently treated with partial nephrectomy, a surgical procedure in which the tumor and part of the kidney are removed. However, some patients, including those with chronic kidney disease, are poor candidates for surgery.

"There may be clear-cut risks with an operation in these patients," said study lead author Stella K. Kang, M.D., M.S., assistant professor of radiology and population health at NYU Langone Health in New York City. "Patients may have significant heart disease or other comorbidities, or a limited life expectancy for some other reason."

In addition, many small renal tumors are either benign or very slow-growing malignancies, making active surveillance of the tumor—typically through periodic CT scans to watch for changes in tumor size—a viable option in patients who are poor candidates for surgery.

Despite its potential, active surveillance may be underutilized due to a lack of consensus guidelines and decision-support tools, according to Dr. Kang.

"We need a better way of weighing the risks, so that more patients can be considered for non-surgical management," she said.

Computer-based simulations represent a promising tool in this process of risk stratification. For the study, Dr. Kang and colleagues constructed a simulation to assess the impact of different treatment approaches in patients with small renal tumors. The model accounted for important variables like the severity of the kidney disease and competing risks of mortality.

Based on 1 million simulations, partial nephrectomy yielded the longest life expectancy in patients of all ages with normal renal function. However, in patients with chronic kidney disease, personalized strategies like active surveillance extended life expectancy over routine nephrectomy.

In several simulated subgroups with moderate chronic kidney disease, personalized treatment decisions extended life expectancy by more than two years compared with a standard surgical approach.

The model also found that the use of MRI to predict papillary renal cell carcinoma, a slow-growing type of kidney cancer, could potentially improve long-term health outcomes by steering some patients toward active surveillance.

The researchers hope the model will bring more value to the clinical decision-making process. Information from the model could provide guidance on the benefits and risks of active surveillance and help identify the right treatments for the right patients, according to Dr. Kang.

"There is probably a larger proportion of patients with small renal tumors who merit a fuller discussion of options than is currently recognized," she said. "While the model does not prescribe one specific treatment, it does provide a set of estimates so that patients and providers can get more information on the viable options."

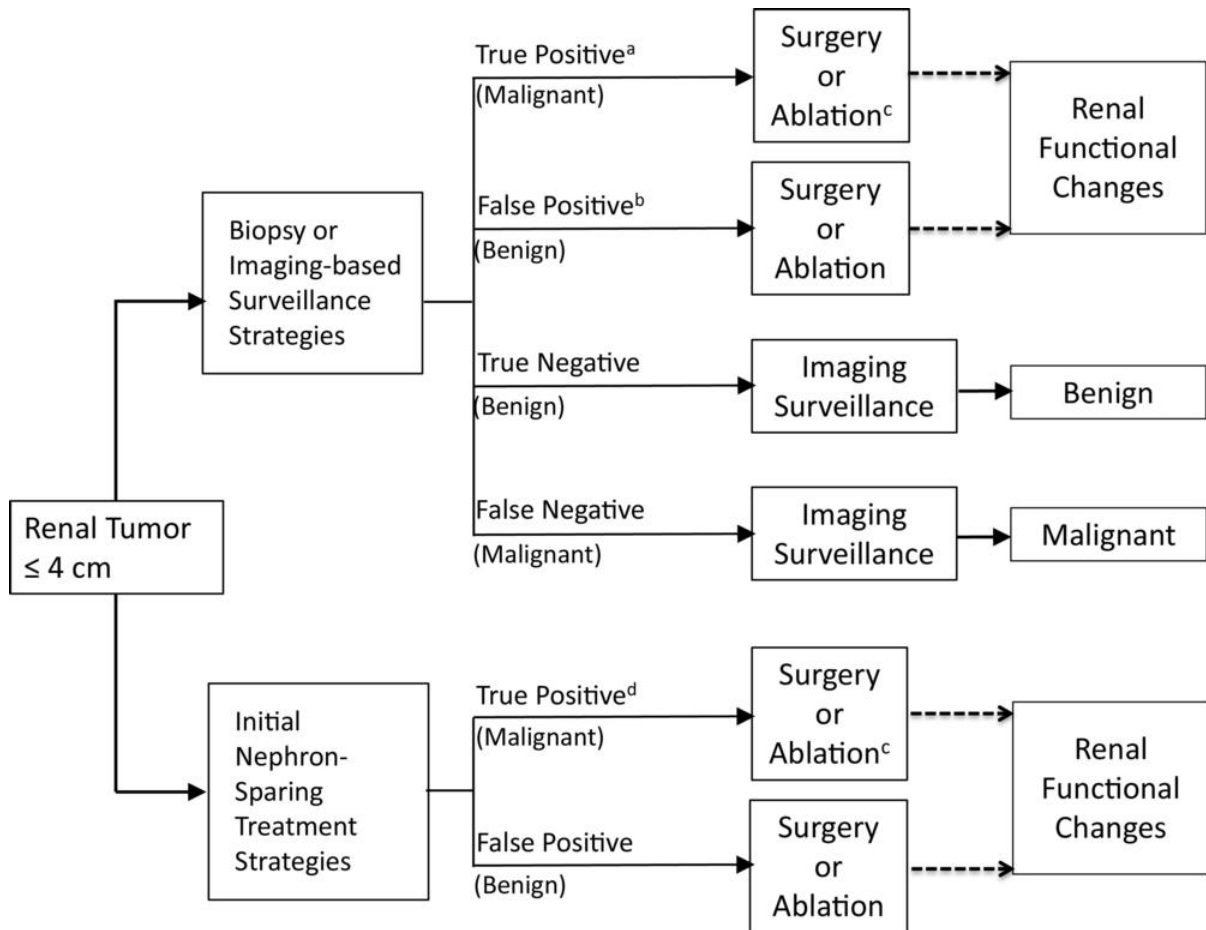
The model also suggests that the effectiveness of biopsy, the tool used most often to discriminate between cancer and benign masses, may be improved by incorporating tumor subtype information into the decision-making process.

On a broader scale, the study shows how computer simulation models could add useful, supplemental information to knowledge gained from clinical trials. While randomized clinical trials remain the cornerstone of evidence-based medicine, their reach is often limited by the significant time and expense they require, and they represent only a limited set of patients.

"Computer disease models can be useful for studying diseases and potential interventions and guiding prospective studies, helping us understand where the research is needed the most," Dr. Kang said.

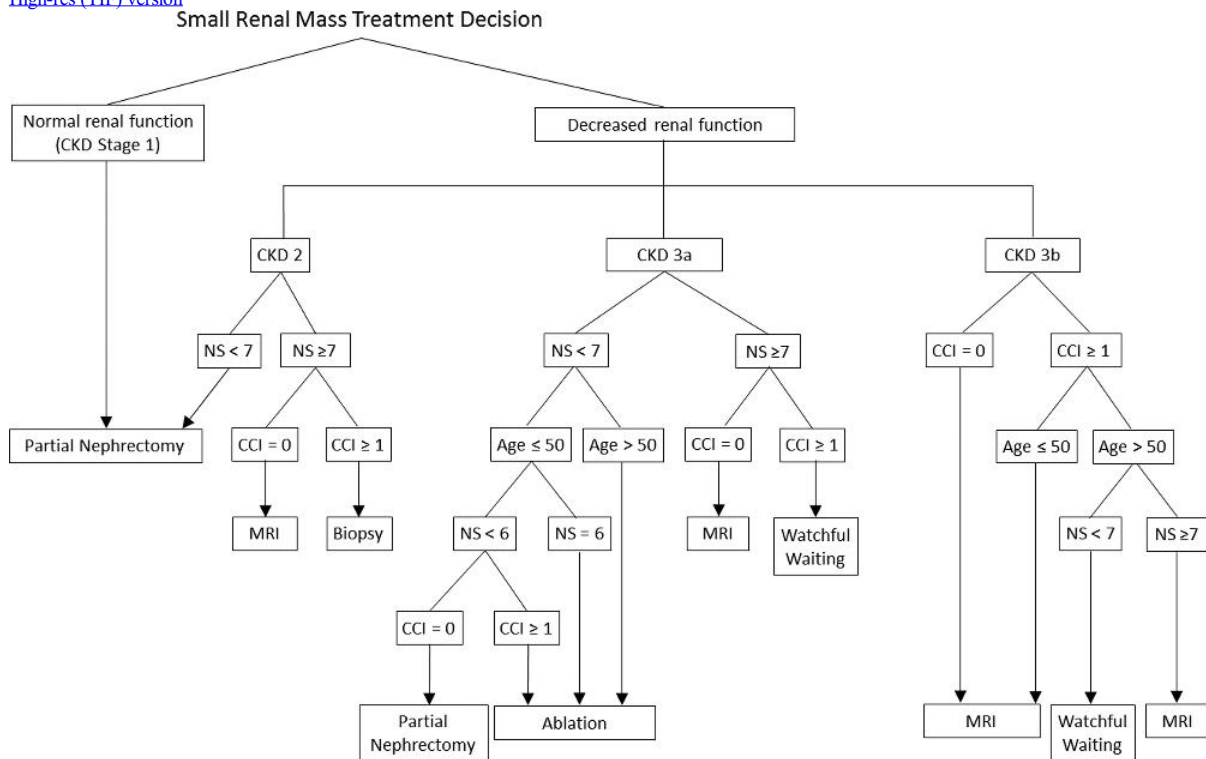
"Personalized Treatment for Small Renal Tumors: Decision Analysis of Competing Causes of Mortality." Collaborating with Dr. Kang were William C. Huang, M.D., Elena B. Elkin, Ph.D., Pari V. Pandharipande, M.D., M.P.H., and R. Scott Braithwaite, M.D., M.Sc.





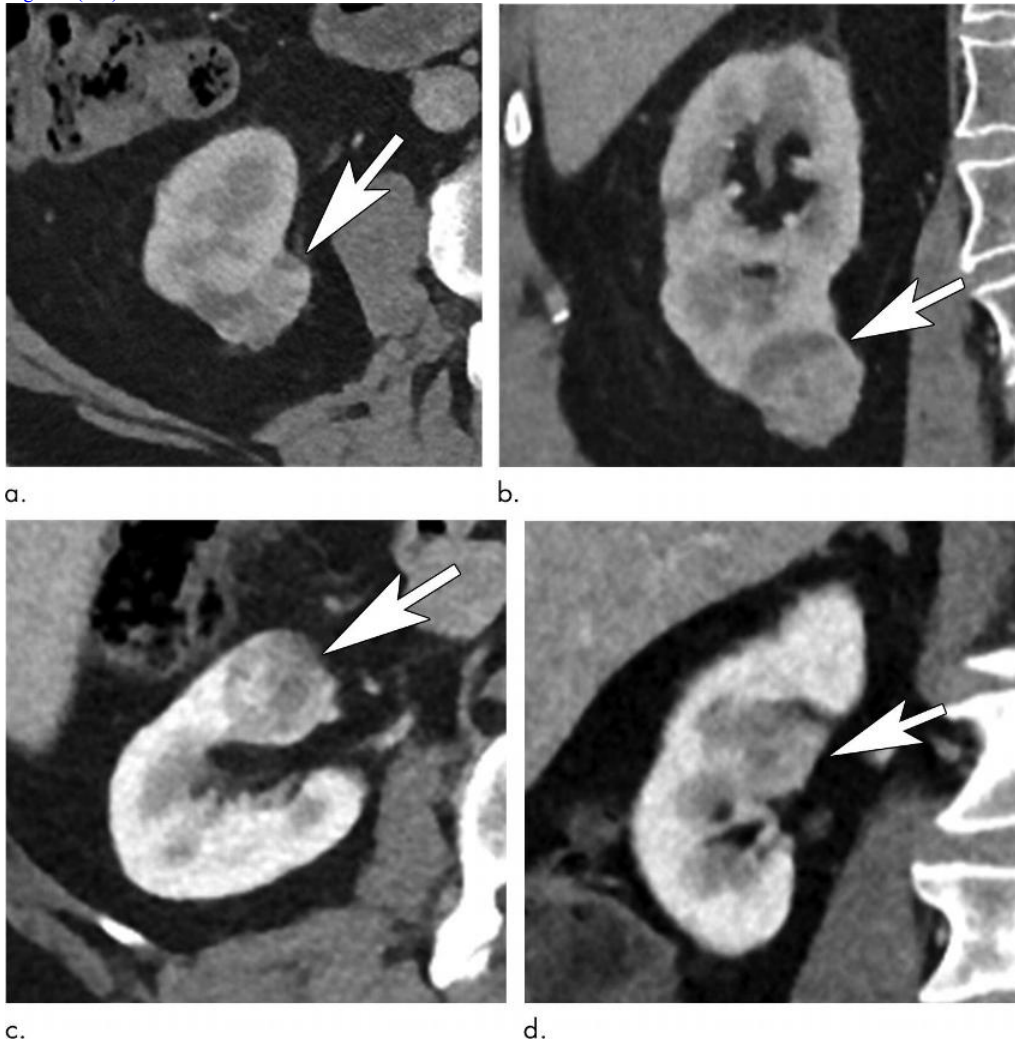
**Figure 2.** Simplified schematic of decision-analytic model of small renal tumor management and consequent events. Malignant lesions watched for growth during imaging surveillance had potential to metastasize, while benign lesions were resected if demonstrating rapid growth.

[High-res \(TIF\) version](#)



**Figure 3.** Treatment algorithm for small renal tumors on the basis of assessment of competing risks. CKD = chronic kidney disease, NS = nephrometry score, CCI = Charlson comorbidity index. Treatment algorithm for small renal tumors on the basis of assessment of competing risks. CKD = chronic kidney disease, NS = nephrometry score, CCI = Charlson comorbidity index.

[High-res \(TIF\) version](#)



**Figure 4.** Renal tumors show low and high anatomic complexity. Contrast-enhanced (a) axial and (b) coronal abdominal CT images in a 70-year-old man diagnosed with a right renal tumor (arrows) Nephrometry score of 4 indicated noncomplex tumor anatomy. In the setting of mild (stage 2) chronic kidney disease, the Renal Anatomy and Function for Indeterminate Renal Mass model results would favor partial nephrectomy. Axial (c) and coronal (d) CT images in a 70-year-old man diagnosed with a centrally located renal neoplasm (arrows). The nephrometry score of 10 indicated high anatomic complexity because of interpolar location and contact with the collecting system and renal hilar vessels.

[High-res \(TIF\) version](#)

Resources:

[Study abstract](#)