

RADIOLOGICAL SOCIETY OF NORTH AMERICA

NOVEMBER 30 - DECEMBER 3, 2025

MCCORMICK PLACE - NORTH HALL, LEVEL 3 - CHICAGO, IL

REVISION

Date: 9/19/2024

By: Julio Pantoja, IL

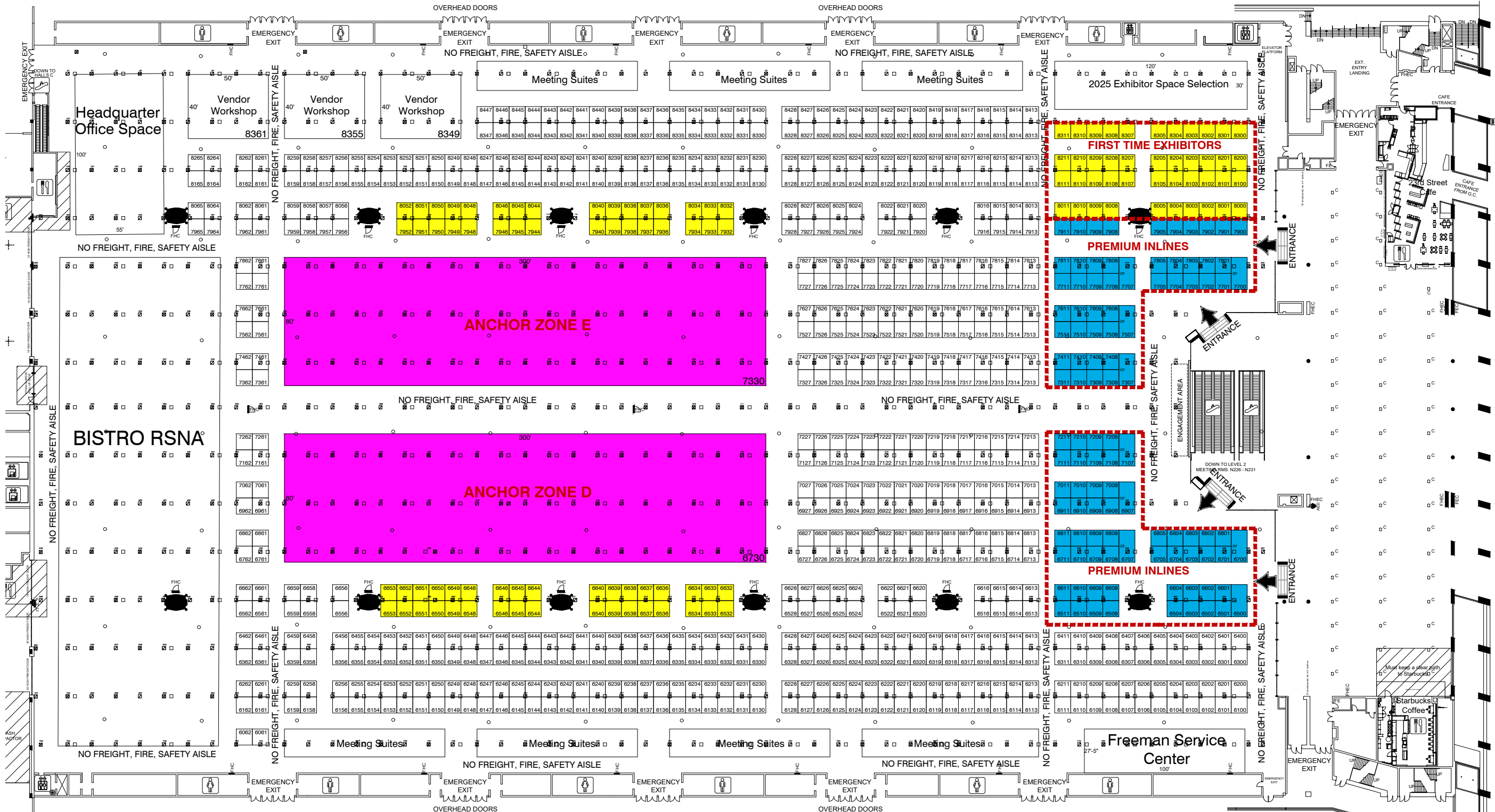
BOOTH COUNT

Inventory as of 09/19/2024

Dimension	Size	Qty	SqFt
10'x10'	100	881	88,100
10'x20'	200	9	1,800
40'x50'	2,000	3	6,000
80'x300'	24,000	2	48,000
Totals:	895	143,900	

BLDG. LEGEND:

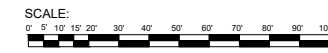
GRAND CONCOURSE LOBBY	
FLOOR LOAD - 100# PER SQ FT	GRAND CONCOURSE LOBBY
PORT LIGHTING	
TYPE C	1 - 15A, 20V RECEPTACLE
	1 - 15A, 120V RECEPTACLES W/ FUSES
	1 - ANTENNA OUTLET
	2 - DUPLEX TELEPHONE OUTLETS
LEGEND - EXHIBIT HALL B1	
FHC - FIRE HOSE CABINET	
EMER - EMERGENCY LIGHTING	
CEILING HEIGHT - 40' UNDER LIGHTS	
FLOOR LOAD - 400# PER SQ FT	
EXHIBIT HALL B1 - FLOOR PORTS	
ELECTRICAL	
TYPE A	1 - 30A, 480V RECEPTACLE
	1 - 30A, 208V RECEPTACLE
	1 - 15A, 120V RECEPTACLES W/ FUSES
	1 - ANTENNA OUTLET
	2 - DUPLEX TELEPHONE OUTLETS
TYPE B	1 - 30A, 208V RECEPTACLE
	1 - 30A, 120V RECEPTACLE
	1 - 15A, 120V RECEPTACLES W/ FUSES
	1 - ANTENNA OUTLET
	2 - DUPLEX TELEPHONE OUTLETS
PLUMBING SERVICE BOX IN FLOOR	
COMPRESSED AIR (PSI) (1/2" I.P.S.) (1/2" I.P.S.)	
NATURAL GAS (1/2" I.P.S.) (1/2" I.P.S.)	
DOMESTIC WATER (1/2" I.P.S.) (1/2" I.P.S.)	
DRAIN IN FLOOR	
LEGEND - HALL B2 (ANNEX)	
FLOOR LOAD - 400# PER SQ FT	
CEILING HEIGHT - 18' UNDER LIGHTS	
FHC - FIRE HOSE CABINET	
FIRE - FIRE HOSE CABINET	
EX - FIRE EXTINGUISHER	
COLUMNS ARE 18" X 18"	
EXHIBIT HALL B2 - FLOOR PORTS	
PLUMBING SERVICE OVERHEAD	
COMPRESSED AIR (PSI) (1/2" I.P.S.) (1/2" I.P.S.)	
NATURAL GAS (1/2" I.P.S.) (1/2" I.P.S.)	
DOMESTIC WATER (1/2" I.P.S.) (1/2" I.P.S.)	
FLOOR DRAIN	
DRAIN SYMBOL	
ELECTRICAL SERVICE FROM OVERHEAD	
GENERAL NOTE & LEGEND	
EMERGENCY LIGHTING	
THE EMERGENCY LIGHTS ON THE	
BLDG. EMERGENCY LIGHTING LAYER CAN	
BE DIMMED BUT NOT TURNED OFF AND	
WILL NEED TO BE SHIPPED IF	
SCREENS ARE NEAR.	
ALL DRAWING LINES ARE SUBJECT TO	
CHANGE PER ON-SITE FIRE MARSHAL	
APPROVAL.	
SYMBOLS	LINE TYPE LEGEND
RESTROOM	ROLL-UP DOORS
WOMEN'S RESTROOM	"DOUBLE"
PASSENGER ELEVATOR	"LOW CLEARANCE"
ESCALATOR	"KEEP CLEAR"
RESTAURANT	"OPEN ABOVE"
RECESSION	
PASSENGER ELEVATOR	



LEVEL 3 HALL B1

KEY

- ANCHOR ZONES D-E
- INLINE ONLY
- PREMIUM INLINE ONLY



DRAWING INFO

Passport Line Item Number:

#13537187

Facility:

MCCORMICK PLACE

Facility Location:

NORTH HALL, LEVEL 3

CHICAGO, IL

Scale: CUSTOM

Project #: 505335

Acct. Sales:

Acct. Mgmt.:

Started: 9/19/2024

Started By: IGNACIO GONZALEZ

Prod. Branch: CHICAGO

FREEMAN

Disclaimer - Every effort has been made to ensure the accuracy of all information contained on this floor plan. However, no warranties, either expressed or implied, are made with respect to this floor plan. If the location of building columns, utilities or other architectural components of the facility is a consideration in the construction or usage of an exhibit, it is the sole responsibility of the exhibitor to physically inspect the facility to verify all dimension and locations.

© Copyright 2024, Freeman All rights reserved.

Confidential and Proprietary - the information contained herein is the proprietary information of Freeman and by accessing the information, the recipient agrees to keep the information confidential and not disclose it to any third party without the prior consent of Freeman. Recipient also agrees to only use the information for its internal evaluation purposes and for no other purpose, without the prior consent of Freeman.