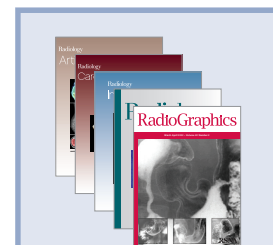
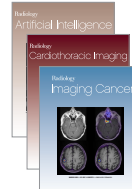
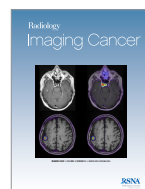
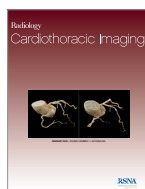
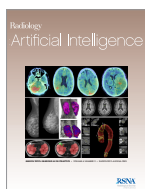


Tier Pricing	<i>Radiology</i>	<i>RadioGraphics</i>	<i>Radiology & RadioGraphics</i>	<i>Radiology Legacy Collection</i>	<i>RadioGraphics Legacy Collection</i>
1	\$918.00	\$535.00	\$1,235.05	\$5,115.00	\$5,000.00
2	\$1,472.00	\$907.00	\$2,022.15	\$5,115.00	\$5,000.00
3	\$2,117.00	\$1,277.00	\$2,884.90	\$5,115.00	\$5,000.00
4	\$3,176.00	\$1,917.00	\$4,329.05	\$5,115.00	\$5,000.00
5	Contact license@rsna.org	Contact license@rsna.org	Contact license@rsna.org	Contact license@rsna.org	Contact license@rsna.org
Individual Subscription	\$455.00	\$249.00	\$528.00	N/A	N/A

Radiology and RadioGraphics are only available online. Print issues are no longer available for purchase.



Tier Pricing	<i>Radiology: Artificial Intelligence</i>	<i>Radiology: Cardiothoracic Imaging</i>	<i>Radiology: Imaging Cancer</i>	All Three Subspecialty Journals	5 Journal Package
1	\$399.00	\$399.00	\$399.00	\$957.60	\$1,987.50
2	\$637.00	\$637.00	\$637.00	\$1,528.80	\$3,217.50
3	\$915.00	\$915.00	\$915.00	\$2,196.00	\$4,604.25
4	\$1,371.00	\$1,371.00	\$1,371.00	\$3,290.40	\$6,904.50
5	Contact license@rsna.org	Contact license@rsna.org	Contact license@rsna.org	Contact license@rsna.org	Contact license@rsna.org
Individual Subscription	\$197.00	\$197.00	\$197.00	\$472.80	\$971.25

TIER INFORMATION

Tiers 1–4 apply to single site institutions only. Multi-site institutions fall under Tier 5 and require a licensed subscription.

Academic

- 1 Associate college (community, technical, further education (UK))
- 2 Baccalaureate or master's level college/university and nursing, veterinary or dental school
- 3 Research university without affiliated medical school or patient care facilities
- 4* Medical school or university with a single medical school or medical center
- 5
 - Academic consortia or research institute
 - Research university with multiple medical schools and/or medical centers or hospitals
 - Universities that share e-resources

**All medical schools within hospitals must use academic rates.*

Hospital

- 1 1–400 beds
- 2 401–750 beds
- 3 751–1,000 beds
- 4 1,001+ beds
- 5 Hospital System

Public/Non-Profit

- 1 Community public library (small scale), general reference public library, non-profit administration office
- 5 Government agency and ministry, research institute, state or national public library

Corporate

- 5
 - Corporate (including private practices and law firms)
 - Private Practice (including medical groups of participating doctors and medical professionals)

RSNA LICENSES

RSNA Licenses grant expanded user rights and are available to all subscribers. Tier 5 institutions are required to license RSNA content. To request a quote, please provide the following information to license@rsna.org:

- ▶ Corporate, Government Agency, Private Practice, Research Institute, State or National Public Library:
Number of relevant FTEs and total FTEs.
- ▶ Consortia: Full name and address for each participating institution.
- ▶ Hospital System: Address of each location and corresponding number of beds.

Prices are in effect from January 1, 2023 through December 31, 2023.

For more information, please visit [RSNA.org/Journals](https://rsna.org/Journals)