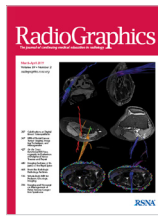


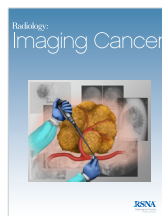
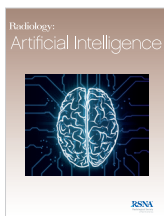
# RSNA 2020 JOURNAL PRICING



Tier Pricing	Radiology		RadioGraphics		Radiology & RadioGraphics		Radiology Legacy	
	Online Subscription Price	Agent Price	Online Subscription Price	Agent Price	Online Subscription Price	Agent Price	Online Subscription Price	Agent Price
1	\$792 <sup>00</sup>	\$752 <sup>40</sup>	\$463 <sup>00</sup>	\$439 <sup>85</sup>	\$1,066 <sup>75</sup>	\$1,013 <sup>41</sup>	\$4,420 <sup>00</sup>	\$4,287 <sup>40</sup>
2	\$1,271 <sup>00</sup>	\$1,207 <sup>45</sup>	\$784 <sup>00</sup>	\$744 <sup>80</sup>	\$1,746 <sup>75</sup>	\$1,659 <sup>41</sup>	\$4,420 <sup>00</sup>	\$4,287 <sup>40</sup>
3	\$1,829 <sup>00</sup>	\$1,737 <sup>55</sup>	\$1,103 <sup>00</sup>	\$1,047 <sup>85</sup>	\$2,492 <sup>20</sup>	\$2,367 <sup>59</sup>	\$4,420 <sup>00</sup>	\$4,287 <sup>40</sup>
4	\$2,744 <sup>00</sup>	\$2,606 <sup>80</sup>	\$1,656 <sup>00</sup>	\$1,573 <sup>20</sup>	\$3,740 <sup>00</sup>	\$3,553 <sup>30</sup>	\$4,420 <sup>00</sup>	\$4,287 <sup>40</sup>
5	Contact <a href="mailto:license@rsna.org">license@rsna.org</a>		Contact <a href="mailto:license@rsna.org">license@rsna.org</a>		Contact <a href="mailto:license@rsna.org">license@rsna.org</a>		Contact <a href="mailto:license@rsna.org">license@rsna.org</a>	
Individual Subscription	\$392 <sup>00</sup>	\$372 <sup>40</sup>	\$215 <sup>00</sup>	\$204 <sup>25</sup>	\$455 <sup>25</sup>	\$432 <sup>49</sup>	N/A	N/A

**PRINT PACKAGES** Print may be added to any online *Radiology* or *RadioGraphics* subscription and may not be purchased separately. Agency discount does not apply to print or single issue orders.

	Print Packages			Single Issues		
	<i>Radiology</i>	<i>RadioGraphics</i>	Both Journals	<i>Radiology</i>	<i>RadioGraphics</i>	<i>RadioGraphics</i> Special Issue
North American subscribers (USA, Canada, Mexico)	\$292 <sup>00</sup>	\$167 <sup>00</sup>	\$459 <sup>00</sup>	\$40 <sup>00</sup>	\$40 <sup>00</sup>	\$50 <sup>00</sup>
International Subscribers	\$390 <sup>00</sup>	\$228 <sup>00</sup>	\$618 <sup>00</sup>	\$55 <sup>00</sup>	\$55 <sup>00</sup>	\$65 <sup>00</sup>



Tier Pricing	Radiology: Artificial Intelligence		Radiology: Cardiothoracic Imaging		Radiology: Imaging Cancer		All Three Specialty Journals	
	Online Subscription Price	Agent Price	Online Subscription Price	Agent Price	Online Subscription Price	Agent Price	Online Subscription Price	Agent Price
1	\$345 <sup>00</sup>	\$327 <sup>75</sup>	\$345 <sup>00</sup>	\$327 <sup>75</sup>	\$345 <sup>00</sup>	\$327 <sup>75</sup>	\$828 <sup>00</sup>	\$786 <sup>60</sup>
2	\$550 <sup>00</sup>	\$522 <sup>50</sup>	\$550 <sup>00</sup>	\$522 <sup>50</sup>	\$550 <sup>00</sup>	\$522 <sup>50</sup>	\$1,320 <sup>00</sup>	\$1,254 <sup>00</sup>
3	\$790 <sup>00</sup>	\$750 <sup>50</sup>	\$790 <sup>00</sup>	\$750 <sup>50</sup>	\$790 <sup>00</sup>	\$750 <sup>50</sup>	\$1,896 <sup>00</sup>	\$1,801 <sup>20</sup>
4	\$1,185 <sup>00</sup>	\$1,125 <sup>75</sup>	\$1,185 <sup>00</sup>	\$1,125 <sup>75</sup>	\$1,185 <sup>00</sup>	\$1,125 <sup>75</sup>	\$2,844 <sup>00</sup>	\$2,701 <sup>80</sup>
5	Contact <a href="mailto:license@rsna.org">license@rsna.org</a>		Contact <a href="mailto:license@rsna.org">license@rsna.org</a>		Contact <a href="mailto:license@rsna.org">license@rsna.org</a>		Contact <a href="mailto:license@rsna.org">license@rsna.org</a>	
Individual Subscription	\$170 <sup>00</sup>	\$161 <sup>50</sup>	\$170 <sup>00</sup>	\$161 <sup>50</sup>	\$170 <sup>00</sup>	\$161 <sup>50</sup>	\$408 <sup>00</sup>	\$387 <sup>60</sup>

## TIER INFORMATION:

Tiers 1-4 apply to single site institutions only. Multi-site institutions fall under Tier 5 and require a licensed subscription.

### Academic

- 1 Associate college (community, technical, further education (UK))
- 2 Baccalaureate or master's level college/university and nursing, veterinary or dental school
- 3 Research university without affiliated medical school or patient care facilities
- 4\* Medical school or university with a single medical school or medical center
- 5
  - Academic consortia or research institute
  - Research university with multiple medical schools and/or medical centers or hospitals
  - Universities that share e-resources

\*All medical schools within hospitals must use academic rates.

### Hospital

- 1 1-400 beds
- 2 401-750 beds
- 3 751-1,000 beds
- 4 1,001+ beds
- 5 Hospital System

### Public/Non-Profit

- 1 Community public library (small scale), general reference public library, non-profit administration office
- 5 Government agency and ministry, research institute, state or national public library

### Corporate

- 5
  - Corporate (including private practices and law firms)
  - Private Practice (including medical groups of participating doctors and medical professionals)

## RSNA LICENSES

RSNA Licenses grant expanded user rights and are available to all subscribers. Tier 5 institutions are required to license RSNA content. To request a quote, please provide the following information to [license@rsna.org](mailto:license@rsna.org):

- ▶ Corporate, Government Agency, Private Practice, Research Institute, State or National Public Library: Number of relevant FTEs and total FTEs.
- ▶ Consortia: Full name and address for each participating institution.
- ▶ Hospital System: Address of each location and corresponding number of beds.

## AGENCY DISCOUNTS

- ▶ Tier 1-4 subscriptions: 5% discount
- ▶ Licenses (Tier 5): 3% discount
- ▶ Legacy Collection: 3% discount

Prices are in effect from January 1, 2020 through December 31, 2020.

For more information, please visit [RSNA.org/Journals](http://RSNA.org/Journals)



For more information, contact RSNA Publications at 1-630-590-7770 or [subscribe@rsna.org](mailto:subscribe@rsna.org)