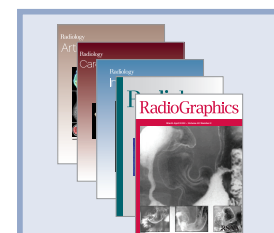
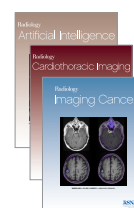
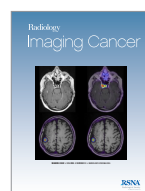
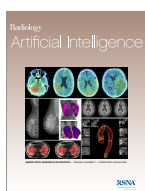


	<i>Radiology</i>		<i>RadioGraphics</i>		<i>Radiology & RadioGraphics</i>		<i>Radiology Legacy Collection</i>		<i>RadioGraphics Legacy Collection</i>	
Tier Pricing	Online Subscription	Agent Price	Online Subscription	Agent Price	Online Subscription	Agent Price	Online Subscription	Agent Price	Online Subscription	Agent Price
1	\$918.00	\$872.10	\$535.00	\$508.25	\$1,235.05	\$1,173.29	\$5,115.00	\$4,961.55	\$5,000.00	\$4,850.00
2	\$1,472.00	\$1,398.40	\$907.00	\$861.65	\$2,022.15	\$1,921.04	\$5,115.00	\$4,961.55	\$5,000.00	\$4,850.00
3	\$2,117.00	\$2,011.15	\$1,277.00	\$1,213.15	\$2,884.90	\$2,740.66	\$5,115.00	\$4,961.55	\$5,000.00	\$4,850.00
4	\$3,176.00	\$3,017.20	\$1,917.00	\$1,821.15	\$4,329.05	\$4,112.60	\$5,115.00	\$4,961.55	\$5,000.00	\$4,850.00
5	Contact license@rsna.org		Contact license@rsna.org		Contact license@rsna.org		Contact license@rsna.org		Contact license@rsna.org	
Individual Subscription	\$455.00	\$432.25	\$249.00	\$236.55	\$528.00	\$501.60	N/A	N/A	N/A	N/A

PRINT PACKAGES Print may be added to any online *Radiology* or *RadioGraphics* subscription and **may not be purchased separately**. Agency discount does not apply to print or single issue orders.

	Print Packages			Single Issues		
	<i>Radiology</i>	<i>RadioGraphics</i>	Both Journals	<i>Radiology</i>	<i>RadioGraphics</i>	<i>RadioGraphics Special Issue</i>
North American subscribers (USA, Canada, Mexico)	\$354.00	\$202.00	\$556.00	\$45.00	\$45.00	\$55.00
International Subscribers	\$473.00	\$276.00	\$749.00	\$60.00	\$60.00	\$70.00



	<i>Radiology: Artificial Intelligence</i>		<i>Radiology: Cardiothoracic Imaging</i>		<i>Radiology: Imaging Cancer</i>		All Three Subspecialty Journals		5 Journal Package	
Tier Pricing	Online Subscription	Agent Price	Online Subscription	Agent Price	Online Subscription	Agent Price	Online Subscription	Agent Price	Online Subscription	Agent Price
1	\$399.00	\$379.05	\$399.00	\$379.05	\$399.00	\$379.05	\$957.60	\$909.72	\$1,987.50	\$1,888.14
2	\$637.00	\$605.15	\$637.00	\$605.15	\$637.00	\$605.15	\$1,528.80	\$1,452.36	\$3,217.50	\$3,056.62
3	\$915.00	\$869.25	\$915.00	\$869.25	\$915.00	\$869.25	\$2,196.00	\$2,086.20	\$4,604.25	\$4,374.04
4	\$1,371.00	\$1,302.45	\$1,371.00	\$1,302.45	\$1,371.00	\$1,302.45	\$3,290.40	\$3,125.88	\$6,904.50	\$6,559.28
5	Contact license@rsna.org		Contact license@rsna.org		Contact license@rsna.org		Contact license@rsna.org		Contact license@rsna.org	
Individual Subscription	\$197.00	\$187.15	\$197.00	\$187.15	\$197.00	\$187.15	\$472.80	\$449.16	\$971.25	\$922.68

TIER INFORMATION

Tiers 1–4 apply to single site institutions only. Multi-site institutions fall under Tier 5 and require a licensed subscription.

Academic

- 1 Associate college (community, technical, further education (UK))
- 2 Baccalaureate or master's level college/university and nursing, veterinary or dental school
- 3 Research university without affiliated medical school or patient care facilities
- 4* Medical school or university with a single medical school or medical center
- 5
 - Academic consortia or research institute
 - Research university with multiple medical schools and/or medical centers or hospitals
 - Universities that share e-resources

**All medical schools within hospitals must use academic rates.*

Hospital

- 1 1–400 beds
- 2 401–750 beds
- 3 751–1,000 beds
- 4 1,001+ beds
- 5 Hospital System

Public/Non-Profit

- 1 Community public library (small scale), general reference public library, non-profit administration office
- 5 Government agency and ministry, research institute, state or national public library

Corporate

- 5
 - Corporate (including private practices and law firms)
 - Private Practice (including medical groups of participating doctors and medical professionals)

RSNA LICENSES

RSNA Licenses grant expanded user rights and are available to all subscribers. Tier 5 institutions are required to license RSNA content. To request a quote, please provide the following information to license@rsna.org:

- ▶ Corporate, Government Agency, Private Practice, Research Institute, State or National Public Library: Number of relevant FTEs and total FTEs.
- ▶ Consortia: Full name and address for each participating institution.
- ▶ Hospital System: Address of each location and corresponding number of beds.

AGENCY DISCOUNTS

- ▶ Tier 1–4 subscriptions: 5% discount
- ▶ Licenses (Tier 5): 3% discount
- ▶ Legacy Collection: 3% discount

Prices are in effect from January 1, 2023 through December 31, 2023.

For more information, please visit [RSNA.org/Journals](https://rsna.org/Journals)