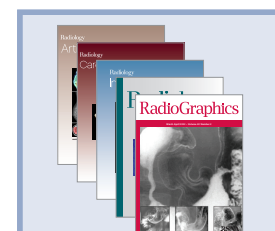
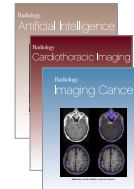
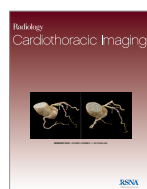
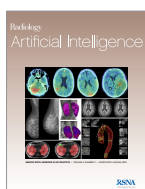


| | <i>Radiology</i> | | <i>RadioGraphics</i> | | <i>Radiology & RadioGraphics</i> | | <i>Radiology Legacy Collection</i> | | <i>RadioGraphics Legacy Collection</i> | |
|-------------------------|--|-------------|--|-------------|--|-------------|--|-------------|--|-------------|
| Tier Pricing | Online Subscription | Agent Price | Online Subscription | Agent Price | Online Subscription | Agent Price | Online Subscription | Agent Price | Online Subscription | Agent Price |
| 1 | \$874.00 | \$830.30 | \$510.00 | \$484.50 | \$1,176.40 | \$1,117.58 | \$4,872.00 | \$4,725.84 | \$4,500.00 | \$4,365.00 |
| 2 | \$1,402.00 | \$1,331.90 | \$864.00 | \$820.80 | \$1,926.10 | \$1,829.80 | \$4,872.00 | \$4,725.84 | \$4,500.00 | \$4,365.00 |
| 3 | \$2,016.00 | \$1,915.20 | \$1,216.00 | \$1,155.20 | \$2,747.20 | \$2,609.84 | \$4,872.00 | \$4,725.84 | \$4,500.00 | \$4,365.00 |
| 4 | \$3,025.00 | \$2,873.75 | \$1,826.00 | \$1,734.70 | \$4,123.35 | \$3,917.19 | \$4,872.00 | \$4,725.84 | \$4,500.00 | \$4,365.00 |
| 5 | Contact license@rsna.org | | Contact license@rsna.org | | Contact license@rsna.org | | Contact license@rsna.org | | Contact license@rsna.org | |
| Individual Subscription | \$433.00 | \$411.35 | \$237.00 | \$225.15 | \$502.50 | \$477.37 | N/A | N/A | N/A | N/A |

Radiology and RadioGraphics are only available online. Print issues are no longer available for purchase.



| | <i>Radiology: Artificial Intelligence</i> | | <i>Radiology: Cardiothoracic Imaging</i> | | <i>Radiology: Imaging Cancer</i> | | All Three Subspecialty Journals | | 5 Journal Package | |
|-------------------------|--|-------------|--|-------------|--|-------------|--|-------------|--|-------------|
| Tier Pricing | Online Subscription | Agent Price | Online Subscription | Agent Price | Online Subscription | Agent Price | Online Subscription | Agent Price | Online Subscription | Agent Price |
| 1 | \$380.00 | \$361.00 | \$380.00 | \$361.00 | \$380.00 | \$361.00 | \$912.00 | \$866.40 | \$1,893.00 | \$1,798.35 |
| 2 | \$607.00 | \$576.65 | \$607.00 | \$576.65 | \$607.00 | \$576.65 | \$1,456.80 | \$1,383.96 | \$3,065.25 | \$2,911.99 |
| 3 | \$871.00 | \$827.45 | \$871.00 | \$827.45 | \$871.00 | \$827.45 | \$2,090.40 | \$1,985.88 | \$4,383.75 | \$4,164.57 |
| 4 | \$1,306.00 | \$1,240.70 | \$1,306.00 | \$1,240.70 | \$1,306.00 | \$1,240.70 | \$3,134.40 | \$2,977.68 | \$6,576.75 | \$6,247.89 |
| 5 | Contact license@rsna.org | | Contact license@rsna.org | | Contact license@rsna.org | | Contact license@rsna.org | | Contact license@rsna.org | |
| Individual Subscription | \$188.00 | \$178.60 | \$188.00 | \$178.60 | \$188.00 | \$178.60 | \$451.20 | \$428.64 | \$925.50 | \$879.22 |

TIER INFORMATION

Tiers 1–4 apply to single site institutions only. Multi-site institutions fall under Tier 5 and require a licensed subscription.

Academic

- 1 Associate college (community, technical, further education (UK))
- 2 Baccalaureate or master's level college/university and nursing, veterinary or dental school
- 3 Research university without affiliated medical school or patient care facilities
- 4* Medical school or university with a single medical school or medical center
- 5
 - Academic consortia or research institute
 - Research university with multiple medical schools and/or medical centers or hospitals
 - Universities that share e-resources

**All medical schools within hospitals must use academic rates.*

Hospital

- 1 1–400 beds
- 2 401–750 beds
- 3 751–1,000 beds
- 4 1,001+ beds
- 5 Hospital System

Public/Non-Profit

- 1 Community public library (small scale), general reference public library, non-profit administration office
- 5 Government agency and ministry, research institute, state or national public library

Corporate

- 5
 - Corporate (including private practices and law firms)
 - Private Practice (including medical groups of participating doctors and medical professionals)

RSNA LICENSES

RSNA Licenses grant expanded user rights and are available to all subscribers. Tier 5 institutions are required to license RSNA content. To request a quote, please provide the following information to license@rsna.org:

- ▶ Corporate, Government Agency, Private Practice, Research Institute, State or National Public Library: Number of relevant FTEs and total FTEs.
- ▶ Consortia: Full name and address for each participating institution.
- ▶ Hospital System: Address of each location and corresponding number of beds.

AGENCY DISCOUNTS

- ▶ Tier 1–4 subscriptions: 5% discount
- ▶ Licenses (Tier 5): 3% discount
- ▶ Legacy Collection: 3% discount

Prices are in effect from January 1, 2022 through December 31, 2022.

For more information, please visit [RSNA.org/Journals](https://rsna.org/Journals)