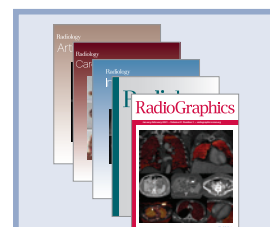
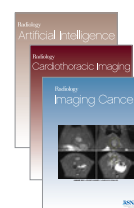
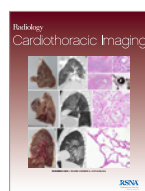
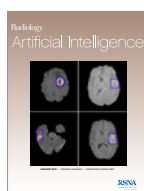




	<i>Radiology</i>		<i>RadioGraphics</i>		<i>Radiology &amp; RadioGraphics</i>		<i>Radiology Legacy</i>	
Tier Pricing	Online Subscription Price	Agent Price	Online Subscription Price	Agent Price	Online Subscription Price	Agent Price	Online Subscription Price	Agent Price
1	\$874.00	\$830.30	\$510.00	\$484.50	\$1,176.40	\$1,117.58	\$4,872.00	\$4,725.84
2	\$1,402.00	\$1,331.90	\$864.00	\$820.80	\$1,926.10	\$1,829.80	\$4,872.00	\$4,725.84
3	\$2,016.00	\$1,915.20	\$1,216.00	\$1,155.20	\$2,747.20	\$2,609.84	\$4,872.00	\$4,725.84
4	\$3,025.00	\$2,873.75	\$1,826.00	\$1,734.70	\$4,123.35	\$3,917.19	\$4,872.00	\$4,725.84
5	Contact <a href="mailto:license@rsna.org">license@rsna.org</a>		Contact <a href="mailto:license@rsna.org">license@rsna.org</a>		Contact <a href="mailto:license@rsna.org">license@rsna.org</a>		Contact <a href="mailto:license@rsna.org">license@rsna.org</a>	
Individual Subscription	\$433.00	\$411.35	\$237.00	\$225.15	\$502.50	\$477.37	N/A	N/A

**PRINT PACKAGES** Print may be added to any online *Radiology* or *RadioGraphics* subscription and **may not be purchased separately**. Agency discount does not apply to print or single issue orders.

	Print Packages			Single Issues		
	<i>Radiology</i>	<i>RadioGraphics</i>	Both Journals	<i>Radiology</i>	<i>RadioGraphics</i>	<i>RadioGraphics Special Issue</i>
North American subscribers (USA, Canada, Mexico)	\$322.00	\$184.00	\$506.00	\$40.00	\$40.00	\$50.00
International Subscribers	\$430.00	\$251.00	\$681.00	\$55.00	\$55.00	\$65.00



	<i>Radiology: Artificial Intelligence</i>		<i>Radiology: Cardiothoracic Imaging</i>		<i>Radiology: Imaging Cancer</i>		All Three Subspecialty Journals		5 Journal Package	
Tier Pricing	Online Subscription Price	Agent Price	Online Subscription Price	Agent Price	Online Subscription Price	Agent Price	Online Subscription Price	Agent Price	Online Subscription Price	Agent Price
1	\$380.00	\$361.00	\$380.00	\$361.00	\$380.00	\$361.00	\$912.00	\$866.40	\$1,893.00	\$1,798.35
2	\$607.00	\$576.65	\$607.00	\$576.65	\$607.00	\$576.65	\$1,456.80	\$1,383.96	\$3,065.25	\$2,911.99
3	\$871.00	\$827.45	\$871.00	\$827.45	\$871.00	\$827.45	\$2,090.40	\$1,985.88	\$4,383.75	\$4,164.57
4	\$1,306.00	\$1,240.70	\$1,306.00	\$1,240.70	\$1,306.00	\$1,240.70	\$3,134.40	\$2,977.68	\$6,576.75	\$6,247.89
5	Contact <a href="mailto:license@rsna.org">license@rsna.org</a>		Contact <a href="mailto:license@rsna.org">license@rsna.org</a>		Contact <a href="mailto:license@rsna.org">license@rsna.org</a>		Contact <a href="mailto:license@rsna.org">license@rsna.org</a>		Contact <a href="mailto:license@rsna.org">license@rsna.org</a>	
Individual Subscription	\$188.00	\$178.60	\$188.00	\$178.60	\$188.00	\$178.60	\$451.20	\$428.64	\$925.50	\$879.22

**TIER INFORMATION**

Tiers 1–4 apply to single site institutions only. Multi-site institutions fall under Tier 5 and require a licensed subscription.

**Academic**

- 1 Associate college (community, technical, further education (UK))
- 2 Baccalaureate or master's level college/university and nursing, veterinary or dental school
- 3 Research university without affiliated medical school or patient care facilities
- 4\* Medical school or university with a single medical school or medical center
- 5
  - Academic consortia or research institute
  - Research university with multiple medical schools and/or medical centers or hospitals
  - Universities that share e-resources

*\*All medical schools within hospitals must use academic rates.*

**Hospital**

- 1 1–400 beds
- 2 401–750 beds
- 3 751–1,000 beds
- 4 1,001+ beds
- 5 Hospital System

**Public/Non-Profit**

- 1 Community public library (small scale), general reference public library, non-profit administration office
- 5 Government agency and ministry, research institute, state or national public library

**Corporate**

- 5
  - Corporate (including private practices and law firms)
  - Private Practice (including medical groups of participating doctors and medical professionals)

**RSNA LICENSES**

RSNA Licenses grant expanded user rights and are available to all subscribers. Tier 5 institutions are required to license RSNA content. To request a quote, please provide the following information to [license@rsna.org](mailto:license@rsna.org):

- ▶ Corporate, Government Agency, Private Practice, Research Institute, State or National Public Library:  
Number of relevant FTEs and total FTEs.
- ▶ Consortia: Full name and address for each participating institution.
- ▶ Hospital System: Address of each location and corresponding number of beds.

**AGENCY DISCOUNTS**

- ▶ Tier 1–4 subscriptions: 5% discount
- ▶ Licenses (Tier 5): 3% discount
- ▶ Legacy Collection: 3% discount

Prices are in effect from January 1, 2022 through December 31, 2022.

For more information, please visit [RSNA.org/Journals](https://rsna.org/Journals)