

# RADIOLOGICAL SOCIETY OF NORTH AMERICA

DECEMBER 1-4, 2024

MCCORMICK PLACE - SOUTH HALL A, LEVEL 3 - CHICAGO, IL

**REVISION**  
Date: 10/17/2023  
By: Ignacio Gonzalez

---

**BOOTH COUNT**

Inventory as of 10/17/2023

Dimension	Size	Qty	SqFt
10x10'	100	1,994	199,400
10x20'	200	8	1,600
10x30'	300	1	300
80x340'	27,200	3	81,600
<b>Totals:</b>		<b>2,006</b>	<b>282,900</b>

**BLDG. LEGEND:**

**FLOOR PLAN GENERAL NOTES**

- FHEC - FIRE HOSE & EXTINGUISHER CABINET
- FHC - FIRE HOSE CABINET
- FEC - FIRE EXTINGUISHER CABINET
- FHR - FIRE HOSE RACK
- FX - FIRE EXTINGUISHER
- EE - EMERGENCY EXIT
- SC - SECURITY CAMERA
- DF - DRINKING FOUNTAIN

**EXHIBIT HALL:**

- CEILING HEIGHT 40'
- FLOOR LOAD - 400# PER SQ. FT.

**GRAND CONCOURSE LOBBY:**

- CEILING HEIGHT 13'6"
- FLOOR LOAD - 100# PER SQ. FT.

2 MANDATORY 20" AISLES MUST RUN E & W THROUGH FOOD PODS (UNLESS APPROVED BY MCCORMICK PLACE)

ALL DRAPES/LINES ARE SUBJECT TO CHANGE PER ON-SITE FIRE MARSHAL APPROVAL

**FLOOR PORTS LEGEND**

- MECHANICAL FLOOR PORTS (EVERY 30' ON CENTER)
- 4" DRAIN FLUSH W/ FLOOR
- 1" DOMESTIC WATER @ 80 PSI
- 1" COMPRESSED AIR @ 100PSI
- 1" NATURAL GAS @ 1 PSI

**ELECTRICAL FLOOR PORTS (EVERY 120" ON CENTER)**

TYPE A

- 120V, SINGLE, 15 AMP
- 208V, THREE, 30 AMP
- 480V, THREE, 100 AMP

TYPE B

- 120V, SINGLE, 15 AMP
- 208V, THREE, 30 AMP
- 208V, THREE, 60 AMP

TYPE C

- 120V, SINGLE, 15 AMP
- 208V, THREE, 30 AMP

**INDIVIDUAL COLUMN DETAILS**

SINGLE COLUMN

- BASE COVER 7" x 7" x 9'-10" HIGH
- SPLIT COLUMN
- BASE COVER 10" x 7" x 9'-10" HIGH

FHC MUST HAVE TOTAL ACCESS  
WATER VALVES MUST HAVE LIMITED ACCESS

FIRE STROBE SITS ON TOP OF EACH SIDE OF COLUMN BASE (8" HIGH FROM THE FLOOR)  
ALL DOORS SWING OPEN 42"

**ACCESS DEFINITIONS**

TOTAL ACCESS:  
ENTRANCE DOOR MUST BE COMPLETELY CLEAR TO NEAREST AISLE IN A DIRECT LINE AND COMPLETELY VISIBLE AT ALL TIMES

LIMITED ACCESS:  
NO IMPEDIMENTS OR OBSTRUCTIONS MAY BE PLACED WITHIN THE 42" CLEARANCE AREA, WHICH PROHIBITS THE COLUMN DOORS FROM OPENING QUICKLY AND COMPLETELY (42"). LIGHTWEIGHT ITEMS SUCH AS CHAIRS, TABLES, ETC. ARE PERMISSIBLE AS WELL AS DRAPES PROVIDED THEY CAN BE MOVED QUICKLY BY ONE PERSON AND DO NOT PREVENT THE DOORS FROM FULLY OPENING.

**DRAWING INFO**

Passport Line Item Number:  
**#11274712**

Facility:  
MCCORMICK PLACE

Facility Location:  
SOUTH HALL A, LEVEL 3

City & State:  
CHICAGO, IL

Scale:  
CUSTOM

Project #: 505335

Acct. Sales: RUSSELL WINGARD

Acct. Mgmt.: JANET DYEHOUSE

Started: 9/20/2023

Started By: IGNACIO GONZALEZ

Prod. Branch: CHICAGO

**FREEMAN**

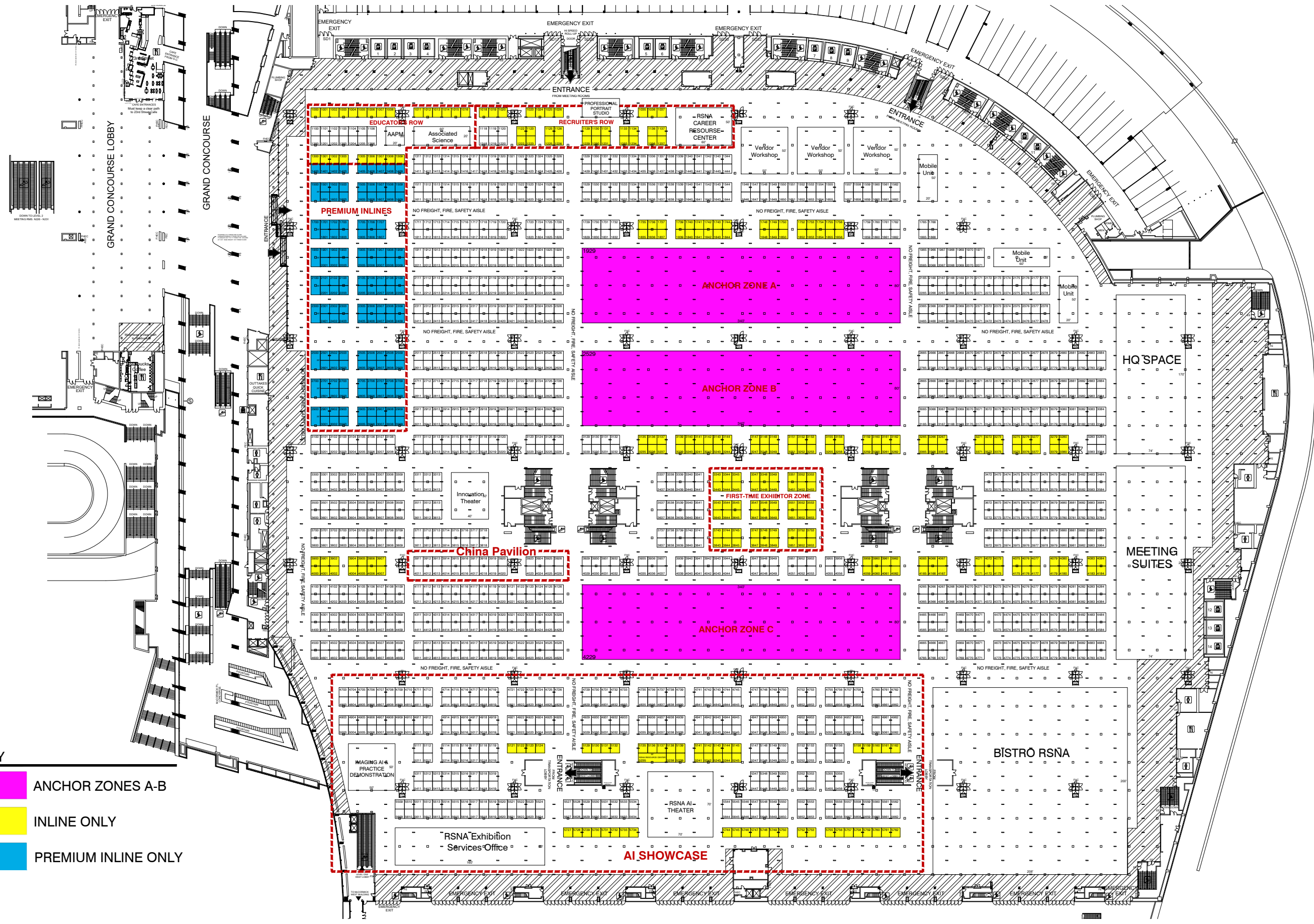
**Disclaimer** - Every effort has been made to ensure the accuracy of all information contained on this floor plan. However, no warranties, either expressed or implied, are made with respect to this floor plan. If the location of building columns, utilities or other architectural components of the facility is a consideration in the construction or usage of an exhibit, it is the sole responsibility of the exhibitor to physically inspect the facility to verify all dimension and locations.

© Copyright 2023, Freeman Co. All rights reserved.

**Confidential and Proprietary** - the information contained herein is the proprietary information of Freeman and by accessing the information, the recipient agrees to keep the information confidential and not disclose it to any third party without the prior consent of Freeman. Recipient also agrees to only use the information for its internal evaluation purposes and for no other purpose, without the prior consent of Freeman.

**KEY**

- ANCHOR ZONES A-B
- INLINE ONLY
- PREMIUM INLINE ONLY



File Path: C:\Vault\Designs\Projects\RSNA\2311\Event\Floor Plans\ANCHORS\RSNA24\_MPSL3\_ANCHORS.dwg | Tab Name: COLORED L11274712.FP

# RADIOLOGICAL SOCIETY OF NORTH AMERICA

DECEMBER 1-31, 2024

MCCORMICK PLACE - NORTH HALL, LEVEL 3 - CHICAGO, IL

REVISION

Date: 10/5/2023

By: Julio Pantoja, IL

### BOOTH COUNT

Inventory as of 10/17/2023

Dimension	Size	Qty	SqFt
10x10'	100	864	86,400
10x20'	200	9	1,800
20x20'	400	3	1,200
20x50'	1,000	1	1,000
40x50'	2,000	2	4,000
80x300'	24,000	2	48,000
<b>Totals:</b>	<b>881</b>	<b>142,400</b>	

### BLDG. LEGEND:

GRAND CONCOURSE LOBBY	
FLOOR LOAD - 100# PER SQ FT	GRAND CONCOURSE LOBBY
PORT LIGHTING	
TYPE C	15 AMP
200V THREE - 30 AMP	
LEGEND - EXHIBIT HALL B1	
FHC - FIRE HOSE CABINET	
EMERGENCY LIGHTING	
CEILING HEIGHT - 40' UNDER LIGHTS	
FLOOR LOAD - 400# PER SQ FT	
EXHIBIT HALL B1 - FLOOR PORTS	
ELECTRICAL	
TYPE A	1- 100A 400V RECEPTACLE
TYPE B	1- 30A 200V RECEPTACLE
TYPE C	1- 15A 120V RECEPTACLES W/UFWS
TYPE D	1- ANTENNA OUTLET
TYPE E	2- DUPLEX TELEPHONE OUTLETS
TYPE F	1- PLUMBING SERVICE BOX IN FLOOR
TYPE G	1- COMPRESSED AIR (PSI) (1/2" I.P.S.)
TYPE H	1- NATURAL GAS (1/2" I.P.S.) (2" W.C.)
TYPE I	1- DOMESTIC WATER (1/2" I.P.S.) (2" W.C.)
TYPE J	1- DRAIN IN FLOOR
LEGEND - HALL B2 (ANNEX)	
CEILING HEIGHT - 18' UNDER LIGHTS	
FLOOR LOAD - 400# PER SQ FT	
FHC - FIRE HOSE CABINET	
FIRE HOSE BACK	
EX - FIRE EXTINGUISHER	
COLUMNS ARE 18" X 18"	
EXHIBIT HALL B2 - FLOOR PORTS	
PLUMBING SERVICE OVERHEAD	
COMPRESSED AIR (PSI) (1/2" I.P.S.)	
NATURAL GAS (1/2" I.P.S.) (2" W.C.)	
DOMESTIC WATER (1/2" I.P.S.) (2" W.C.)	
FLOOR DRAIN	
DRAIN SYMBOL	
ELECTRICAL SERVICE FROM OVERHEAD	
GENERAL NOTE & LEGEND	
EMERGENCY LIGHTING	
THE EMERGENCY LIGHTS ON THE	
BLDG. EMERGENCY LIGHTING LAYER CAN	
BE DIMMED BUT NOT TURNED OFF AND	
WILL NEED TO BE SHIPPED IF	
SCREENS ARE NEAR.	
ALL DRAPES LINES ARE SUBJECT TO	
CHANGE PER ON-SITE FIRE MARSHAL	
APPROVAL.	
INTL SYMBOLS	LINE TYPE LEGEND
RESTROOM	ROLL UP DOORS
WOMEN'S RESTROOM	"ADAPTABLE"
PASSENGER ELEVATOR	"LOW CLEARANCE"
ESCALATOR	"KEEP CLEAR"
RESTAURANT	"OPEN ABOVE"
RESIDUE ELEVATOR	

### DRAWING INFO

Passport Line Item Number:

**#11274712**

Facility:

MCCORMICK PLACE

Facility Location:

NORTH HALL, LEVEL 3

City & State:

CHICAGO, IL

Scale: CUSTOM

Project #: 505335

Acct. Sales:

Acct. Mgmt.:

Started By: IGNACIO GONZALEZ

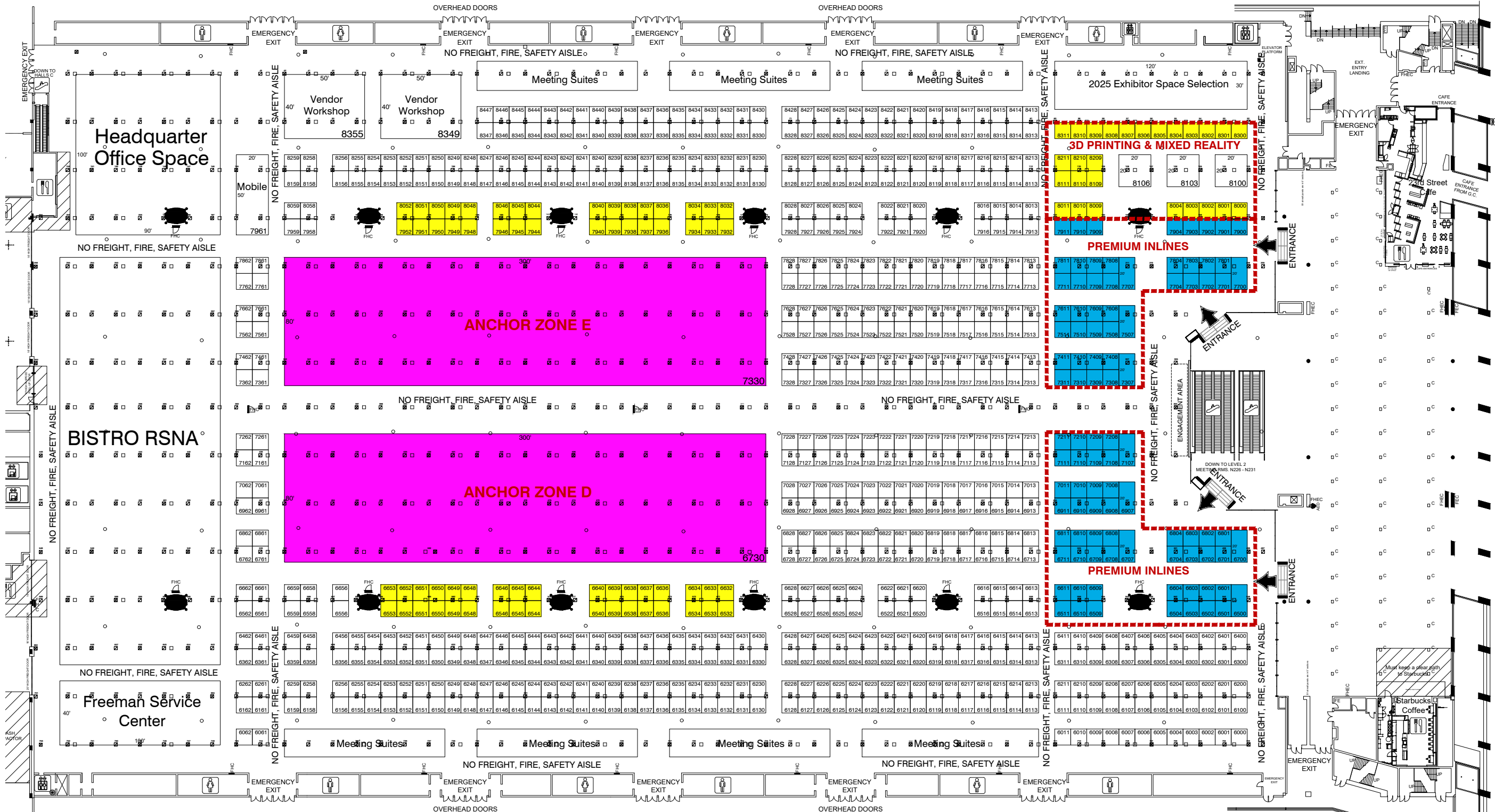
Prod. Branch: CHICAGO

## FREEMAN

**Disclaimer** - Every effort has been made to ensure the accuracy of all information contained on this floor plan. However, no warranties, either expressed or implied, are made with respect to this floor plan. If the location of building columns, utilities or other architectural components of the facility is a consideration in the construction or usage of an exhibit, it is the sole responsibility of the exhibitor to physically inspect the facility to verify all dimension and locations.

© Copyright 2023, Freeman All rights reserved.

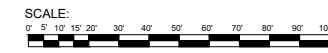
**Confidential and Proprietary** - the information contained herein is the proprietary information of Freeman and by accessing the information, the recipient agrees to keep the information confidential and not disclose it to any third party without the prior consent of Freeman. Recipient also agrees to only use the information for its internal evaluation purposes and for no other purpose, without the prior consent of Freeman.



LEVEL 3 HALL B1

### KEY

- ANCHOR ZONES D-E
- INLINE ONLY
- PREMIUM INLINE ONLY



File Path: C:\Vault\Designs\Projects\RSNA\2311Event\Floor Plans\ANCHORS\RSNA2311 Event\Floor Plans\ANCHORS.dwg | Tab Name: COLORED L11274712 FP