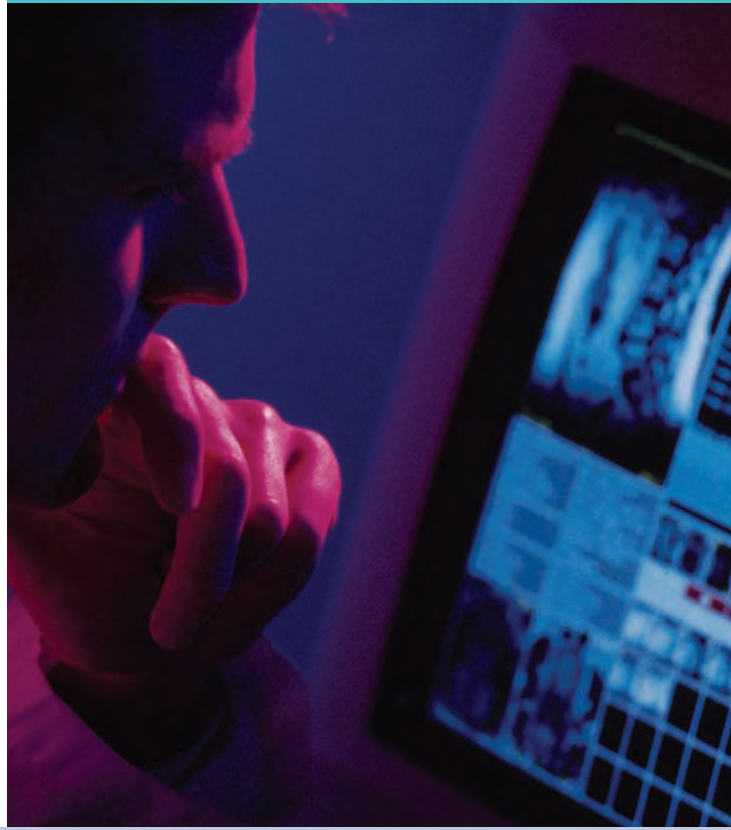


CME: What's New?



RSNA[®] | Radiological Society
of North America
Founded in 1915

820 Jorie Blvd.
Oak Brook, IL 60523-2251
1-630-571-2670 FAX: 1-630-571-7837
RSNA.org

RSNA[®] Education

*The maintenance of certification (MOC) program requires diplomates of the American Board of Radiology (ABR) who hold 10-year time-limited certificates in diagnostic radiology and its subspecialties, in radiation oncology, and in radiologic physics to show **evidence of lifelong learning** by earning continuing medical education (CME) credits and **evidence of participation in a program of periodic self-assessment** by completing ABR-qualified self-assessment modules (SAMs).*

CME is not only a physician's professional responsibility, it is also a requirement.

MOC Requirements for CME

While almost all licensed physicians are required to pursue continuing medical education, the ABR's MOC Program specifies CME requirements:

- A radiologist who holds a 10-year certificate in diagnostic radiology and its subspecialties must earn a minimum of 500 CME credits over the 10-year cycle of the certificate, with at least 250 credits in AMA PRA Category 1 (offered by a CME provider accredited by the Accreditation Council for Continuing Medical Education) and the remaining credits in Categories 1 or 2. A radiation oncologist who holds a time-limited certificate must earn a minimum of 200 Category 1 Credits over the 10-year cycle.

- In addition, ABR requires each diplomate with a time-limited certificate in diagnostic radiology or its subspecialties to complete a series of 20 SAMs over the 10-year period. SAMs that count toward MOC must be qualified (approved) by the ABR and organized into one of two groups: general content SAMs for all diplomates and clinical content SAMs specific to the diplomate's subspecialty. Sixteen of the 20 SAMs must be in the clinical content group. A diplomate with a subspecialty certificate needs to complete six of the 16 clinical SAMs in the subspecialty.
- Self-assessment requirements for radiation oncologists include participation in educational programs, such as refresher courses, workshops, and reading assignments that meet ABR standards for SAMs and have an automated self-assessment component that provides feedback. Radiation oncologists must complete eight SAMs over the 10-year period.
- Radiologic physicists must earn a minimum of 500 CME credits, with at least 250 credits in Category 1; the remaining credits may be Category 1 or may be earned through self-directed educational projects over 10 years.
- Diplomates who hold both lifetime primary certificates in diagnostic radiology and time-limited subspecialty certification must meet the MOC requirements for their particular subspecialty.



- All lifetime certificate holders are encouraged to participate in the MOC program, although they are not required to do so.

How RSNA Is Helping

To aid RSNA members in acquiring and keeping track of CME credits, the Society has developed new educational offerings and tools to keep track of your CME credits, to assess your CME needs, and to plan future CME activities.

RSNA has a number of activities and online resources that offer CME and SAM opportunities. The Society has also streamlined its content codes to help you identify the CME activities directly related to your subspecialty (see back panel). Among the resources available:

- **My CME Action Plan**—This Web-based template allows you to develop the personalized education plan required by the ABR as part of

the MOC process. As you complete the plan, you list your CME requirements, prioritize your educational needs, plan future CME activities and record MOC-related activities for lifelong learning. Go to RSNA.org/education, click on MOC, and then on My CME Action Plan.

- **RSNA Annual Meeting**—The RSNA Scientific Assembly and Annual Meeting is a rich source of CME/SAM credit through refresher courses, scientific sessions, and other educational offerings. In 2005, each physician could earn up to 83 CME credits. In addition, attendees may be able to complete SAMs presented at the meeting.
- **InteractED®**—This online educational resource offers peer-reviewed CME programs based on refresher courses, plenary sessions, and focus sessions presented at the annual meeting, as well as education exhibits, cases of the day, and CME tests from *RadioGraphics*. Go to RSNA.org/education and click on CME.
- **Self-Assessment Modules**—RSNA SAMs consist of peer-reviewed educational materials related to a wide variety of subspecialty areas, including breast radiology, chest radiology, emergency radiology, and pediatric radiology. All RSNA SAMs meet ABR's MOC requirements for self-assessment and also award CME credit for successful completion. You may access SAMs at RSNA.org/education. Click on MOC.

- **Education Portal**—The education portal of *RSNA.org* provides links to many useful resources for lifelong learning.
- **RSNA CME Credit Repository**—RSNA automatically deposits CME and SAM credits earned through RSNA activities into the RSNA CME Credit Repository (*RSNA.org/cme*). As an RSNA member, you can also self-enter other earned CME credits to create a cumulative CME report or print a CME certificate for RSNA-awarded *AMA PRA Category 1 Credits™*.
- **CME Gateway**—RSNA and several other medical specialty organizations have launched an online CME Gateway (*www.CMEgateway.org*). The CME Gateway allows you to view, print and generate reports of CME credits earned from each of the sponsoring organizations to which you belong.

Useful Web Sites:

RSNA.org/education
www.theabr.org
www.abms.org
www.CMEgateway.org

For additional information on RSNA's MOC resources, call 1-800-272-2920.

Content Codes for CME Credit Categories

All RSNA educational content is coded to assist you in finding the material you need and want to stay current in your areas of practice and interest:

BR	Breast (Imaging and Interventional)
CA	Cardiac Radiology
CH	Chest Radiology
CT	Computed Tomography
ED	Education
ER	Emergency Radiology
GI	Gastrointestinal Radiology
GN	General
GU	Genitourinary Radiology
HN	Head and Neck
HP	Health Policy
IN	Informatics
MA	Management
MI	Molecular Imaging
MK	Musculoskeletal Radiology
MO	Mammography
MR	Magnetic Resonance Imaging
NM	Nuclear Medicine
NR	Neuroradiology
OB	Obstetric/Gynecologic Radiology
OI	Oncologic Imaging
OT	Other
PD	Pediatric Radiology
PH	Physics and Basic Science
PR	Professionalism
QA	Quality Assurance/Quality Improvement
RO	Radiation Oncology
RS	Research and Statistical Methods
US	Ultrasound
VI	Vascular and/or Interventional Radiology